



# Product Data Sheet

## StorMaxx PTEC Series

Model	Volume (G)	Weight (lbs)	Diameter (in)	Height (in)	Wall Material	# of HX	Insulation Thickness (in)	Element / Backup
StorMaxx-PTEC-050-1HX-V4	50	236	23	54.3	Glass Lined	1	1.7	None
StorMaxx-PTEC-050-2HX-V4	50	236	23	54.3	Glass Lined	2	1.7	None
StorMaxx-PTEC-080-1HX-V4	80	276	23.6	70.5	Glass Lined	1	2	None
StorMaxx-PTEC-080-2HX-V4	80	276	23.6	70.5	Glass Lined	2	2	None
StorMaxx-PTEC-119-1HX-V4	119	375	27.6	74.8	Glass Lined	1	2	None
StorMaxx-PTEC-119-2HX-V4	119	375	27.6	74.8	Glass Lined	2	2	None

### Connection / Port Sizes

Warm Water	3/4" NPT M
Cold Water	3/4" NPT M
Safety Valve Connection	3/4" NPT F
Drain Valve Connection	3/4" NPT F

### Technical Features

- Steel (no.: 6837)
- Standard: DIN EN 10120
- Steel Quality: P245NB
- Internal Coating: double enameling (heated at 1580F) (vitrified steel)
- Supplied with magnesium anode for corrosion protection
- 4" flange for convenient interior cleaning
- Serpentine Coil: single wall steel plate (ST 37.2)
- Insulation Material / Density: CFC-free polyurethane / 40kg/m<sup>3</sup>
- Max Working Pressure: 116 PSI / Max Testing Pressure: 174 PSI
- Max Temperature: 203F



SunMaxx Solar  
 5098 NY 206  
 Bainbridge, NY 13733  
 P: 1.877.786.6299  
 F: 1.800.786.0329  
[www.SunMaxxSolar.com](http://www.SunMaxxSolar.com)



# Product Data Sheet

## StorMaxx PTEC Series (cont.)

Models	50G Models	80G Models	119G Models
<b>Dimensions (Height Above Floor Level)</b>			
Return 1	8.8 in	8.1 in	8.7 in
Return 2	28.5 in	40.0 in	43.9 in
Supply 1	26.1 in	35.6 in	38.0 in
Supply 2	45.8 in	57.3 in	63.1
Cold Water	Top	Top	Top
Warm Water	Top	Top	Top

<b>Heat Exchanger Coil Data</b>			
Capacity (Top)	1.9 G	1.9 G	2.5 G
Surface Area (Top)	11.8 FT <sup>2</sup>	11.8 FT <sup>2</sup>	15.1 FT <sup>2</sup>
Coil Length (Top)	34.1 FT	34.1 FT	45.3 FT
Capacity (Bottom)	1.9 G	2.6 G	3.5 G
Surface Area (Bottom)	11.8 FT <sup>2</sup>	16.1 FT <sup>2</sup>	21.5 FT <sup>2</sup>
Coil Length (Bottom)	34.1 FT	47.6 FT	62.3 FT

Models	50G Models	80G Models	119G Models
<b>Pressure Drop Through Coils (Based On Flow Rate)</b>			
Flow Rate (GPM)	Head Loss (FT)		
2 (Top / Bottom)	0.1 / 0.1	0.1 / 0.14	0.14 / 0.19
4 (Top / Bottom)	0.36 / 0.36	0.36 / 0.5	0.48 / 0.66
6 (Top / Bottom)	0.79 / 0.79	0.79 / 1.11	1.06 / 1.46



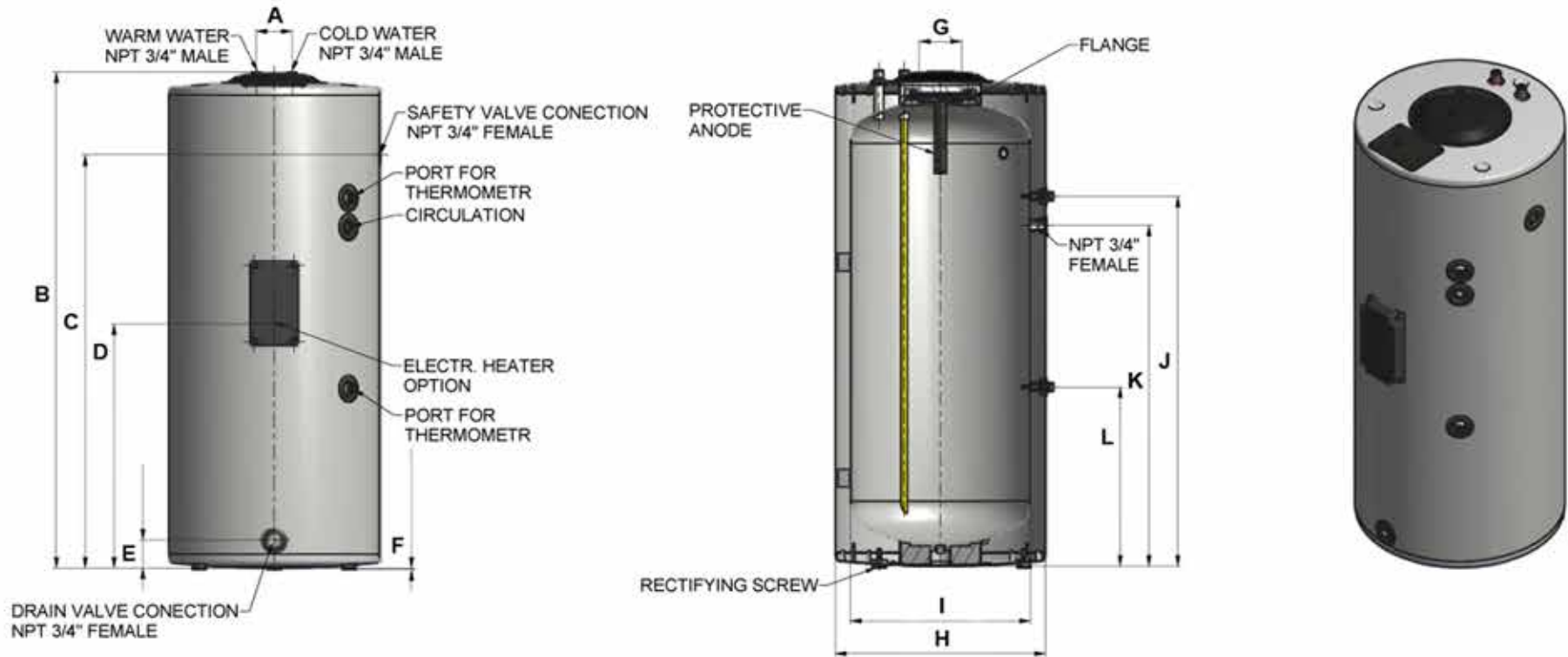
SunMaxx Solar  
 5098 NY 206  
 Bainbridge, NY 13733  
 P: 1.877.786.6299  
 F: 1.800.786.0329  
[www.SunMaxxSolar.com](http://www.SunMaxxSolar.com)



# Product Data Sheet

## StorMaxx PTEC Series (cont.)

StorMaxx-PTEC-050-1HX-V4, StorMaxx-PTEC-050-2HX-V4



### Specific Dimensions (in Inches)

A	B	C	D	E	F	G	H	I	J	K	L
3.9	54.3	45.2	26.7	3.1	1	4.6	23	19.7	40.5	37.3	19.6

SunMaxx Solar  
 5098 NY 206  
 Bainbridge, NY 13733  
 P: 1.877.786.6299  
 F: 1.800.786.0329  
[www.SunMaxxSolar.com](http://www.SunMaxxSolar.com)

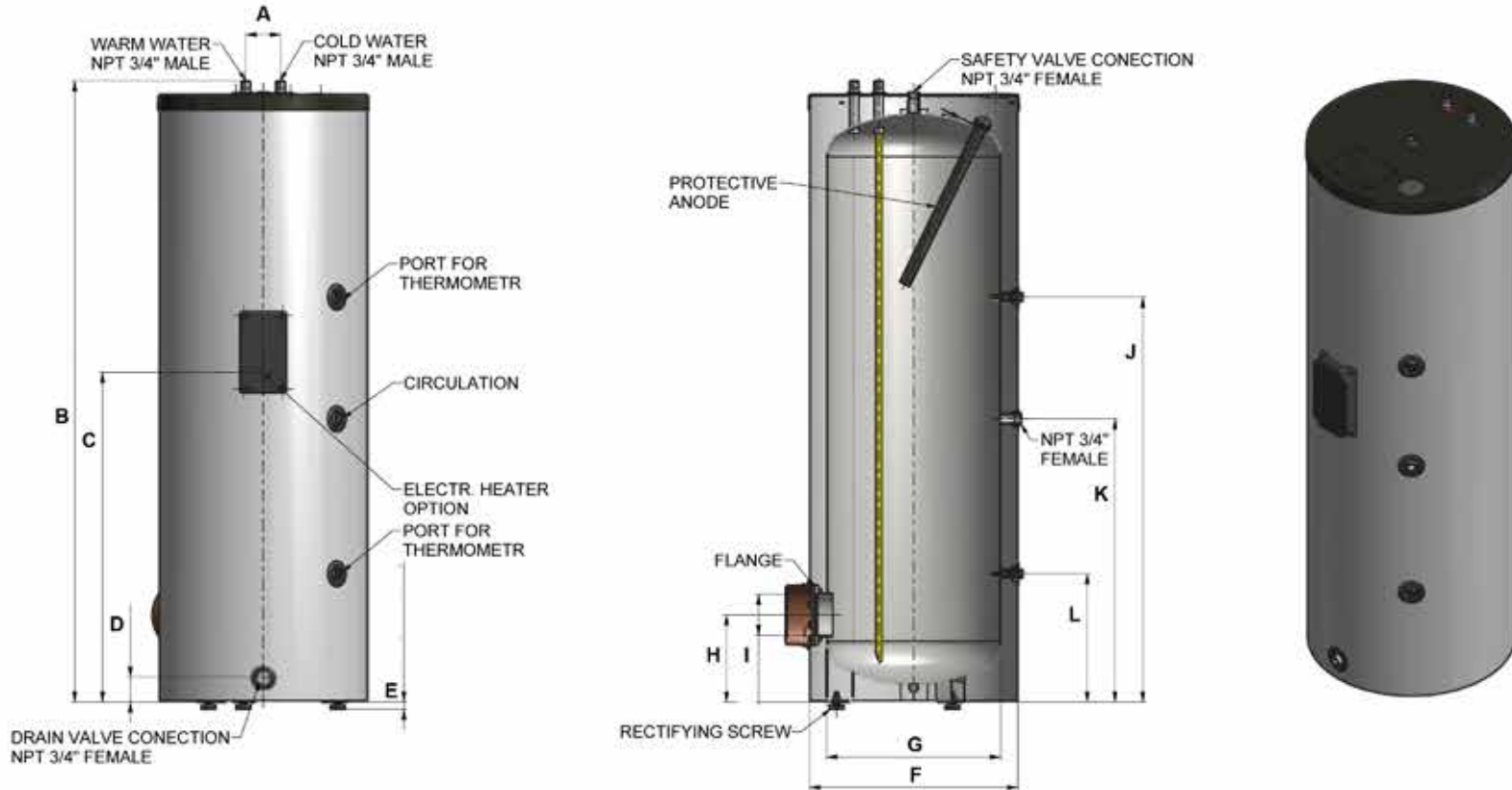




# Product Data Sheet

## StorMaxx PTEC Series (cont.)

StorMaxx-PTEC-080-1HX-V4, StorMaxx-PTEC-080-2HX-V4



Specific Dimensions (in Inches)

A	B	C	D	E	F	G	H	I	J	K	L
3.9	70.4	37.4	2.8	1.6	23.6	19.7	9.9	4.7	45.9	32.1	14.5

SunMaxx Solar  
 5098 NY 206  
 Bainbridge, NY 13733  
 P: 1.877.786.6299  
 F: 1.800.786.0329  
[www.SunMaxxSolar.com](http://www.SunMaxxSolar.com)

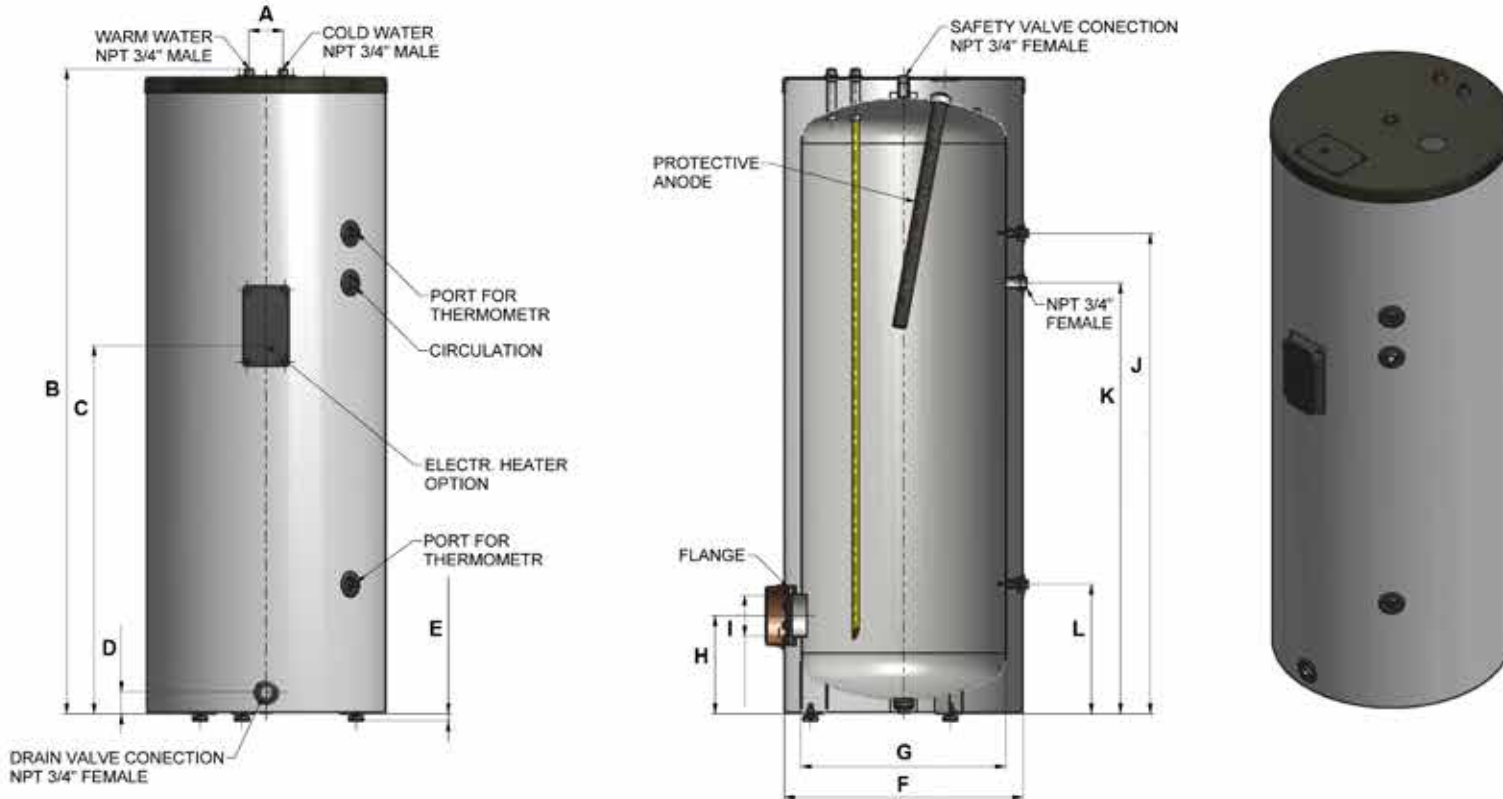




# Product Data Sheet

## StorMaxx PTEC Series (cont.)

StorMaxx-PTEC-119-1HX-V4, StorMaxx-PTEC-119-2HX-V4



### Specific Dimensions (in Inches)

A	B	C	D	E	F	G	H	I	J	K	L
3.9	74.5	42.5	2.6	1.6	27.6	23.6	11.3	4.7	55.5	49.8	15

SunMaxx Solar  
 5098 NY 206  
 Bainbridge, NY 13733  
 P: 1.877.786.6299  
 F: 1.800.786.0329  
[www.SunMaxxSolar.com](http://www.SunMaxxSolar.com)





# Product Data Sheet

## StorMaxx SE Series

Model	Volume (G)	Weight (lbs)	Diameter (in)	Height (in)	Wall Material	# of HX	Insulation Thickness (in)	Element / Backup
StorMaxx-SE-050-1HX-EE	50	236	23	54.3	Glass Lined	1	1.7	4500W/240V
StorMaxx-SE-050-2HX-EE	50	236	23	54.3	Glass Lined	2	1.7	4500W/240V
StorMaxx-SE-080-0HX-EE	80	276	23.6	70.5	Glass Lined	0	2	4500W/240V
StorMaxx-SE-080-1HX-EE	80	276	23.6	70.5	Glass Lined	1	2	4500W/240V
StorMaxx-SE-080-2HX-EE	80	276	23.6	70.5	Glass Lined	2	2	4500W/240V
StorMaxx-SE-119-0HX-EE	119	375	27.6	74.8	Glass Lined	0	2	4500W/240V
StorMaxx-SE-119-1HX-EE	119	375	27.6	74.8	Glass Lined	1	2	4500W/240V
StorMaxx-SE-119-2HX-EE	119	375	27.6	74.8	Glass Lined	2	2	4500W/240V

### Connection / Port Sizes

Warm Water	3/4" NPT M
Cold Water	3/4" NPT M
Safety Valve Connection	3/4" NPT F
Drain Valve Connection	3/4" NPT F

### Technical Features

- Steel (no.: 6837)
- Standard: DIN EN 10120
- Steel Quality: P245NB
- Internal Coating: double enameling (heated at 1580F) (vitrified steel)
- Supplied with magnesium anode for corrosion protection
- 4" flange for convenient interior cleaning
- Serpentine Coil: single wall steel plate (ST 37.2)
- Insulation Material / Density: CFC-free polyurethane / 40kg/m3
- Max Working Pressure: 116 PSI / Max Testing Pressure: 174 PSI
- Max Temperature: 203F



SunMaxx Solar  
 5098 NY 206  
 Bainbridge, NY 13733  
 P: 1.877.786.6299  
[www.SunMaxxSolar.com](http://www.SunMaxxSolar.com)



# Product Data Sheet

## StorMaxx SE Series (cont.)

Models	50G Models	80G Models	119G Models
<b>Dimensions (Height Above Floor Level)</b>			
Return 1	8.8 in	8.1 in	8.7 in
Return 2	28.5 in	40.0 in	43.9 in
Supply 1	26.1 in	35.6 in	38.0 in
Supply 2	45.8 in	57.3 in	63.1
Cold Water	Top	Top	Top
Warm Water	Top	Top	Top

### Heat Exchanger Coil Data

Capacity (Top)	1.9 G	1.9 G	2.5 G
Surface Area (Top)	11.8 FT <sup>2</sup>	11.8 FT <sup>2</sup>	15.1 FT <sup>2</sup>
Coil Length (Top)	34.1 FT	34.1 FT	45.3 FT
Capacity (Bottom)	1.9 G	2.6 G	3.5 G
Surface Area (Bottom)	11.8 FT <sup>2</sup>	16.1 FT <sup>2</sup>	21.5 FT <sup>2</sup>
Coil Length (Bottom)	34.1 FT	47.6 FT	62.3 FT

Models	50G Models	80G Models	119G Models
<b>Pressure Drop Through Coils (Based On Flow Rate)</b>			
Flow Rate (GPM)	Head Loss (FT)		
2 (Top / Bottom)	0.1 / 0.1	0.1 / 0.14	0.14 / 0.19
4 (Top / Bottom)	0.36 / 0.36	0.36 / 0.5	0.48 / 0.66
6 (Top / Bottom)	0.79 / 0.79	0.79 / 1.11	1.06 / 1.46



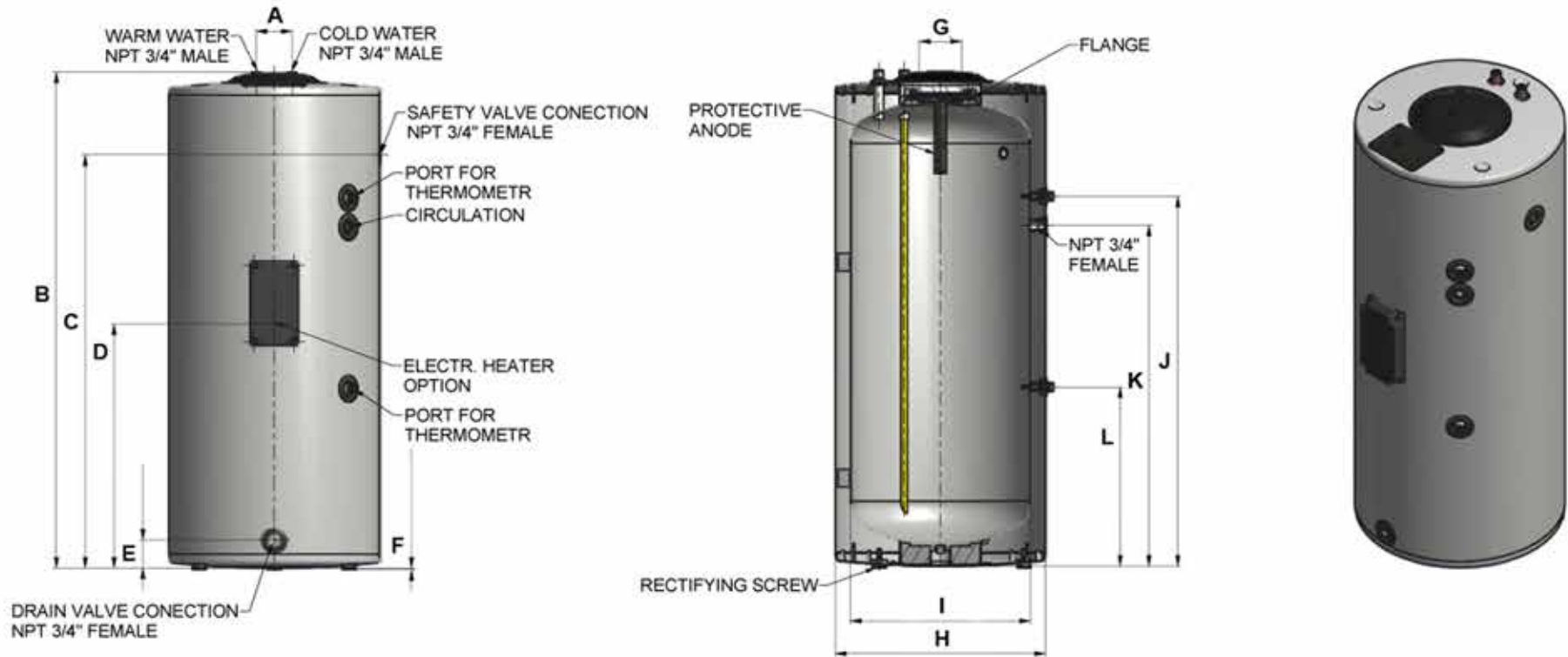
SunMaxx Solar  
 5098 NY 206  
 Bainbridge, NY 13733  
 P: 1.877.786.6299  
 F: 1.800.786.0329  
[www.SunMaxxSolar.com](http://www.SunMaxxSolar.com)



# Product Data Sheet

## StorMaxx SE Series (cont.)

StorMaxx-SE-050-1HX-EE, StorMaxx-SE-050-2HX-EE



### Specific Dimensions (in Inches)

A	B	C	D	E	F	G	H	I	J	K	L
3.9	54.3	45.2	26.7	3.1	1	4.6	23	19.7	40.5	37.3	19.6

SunMaxx Solar  
 5098 NY 206  
 Bainbridge, NY 13733  
 P: 1.877.786.6299  
 F: 1.800.786.0329  
[www.SunMaxxSolar.com](http://www.SunMaxxSolar.com)



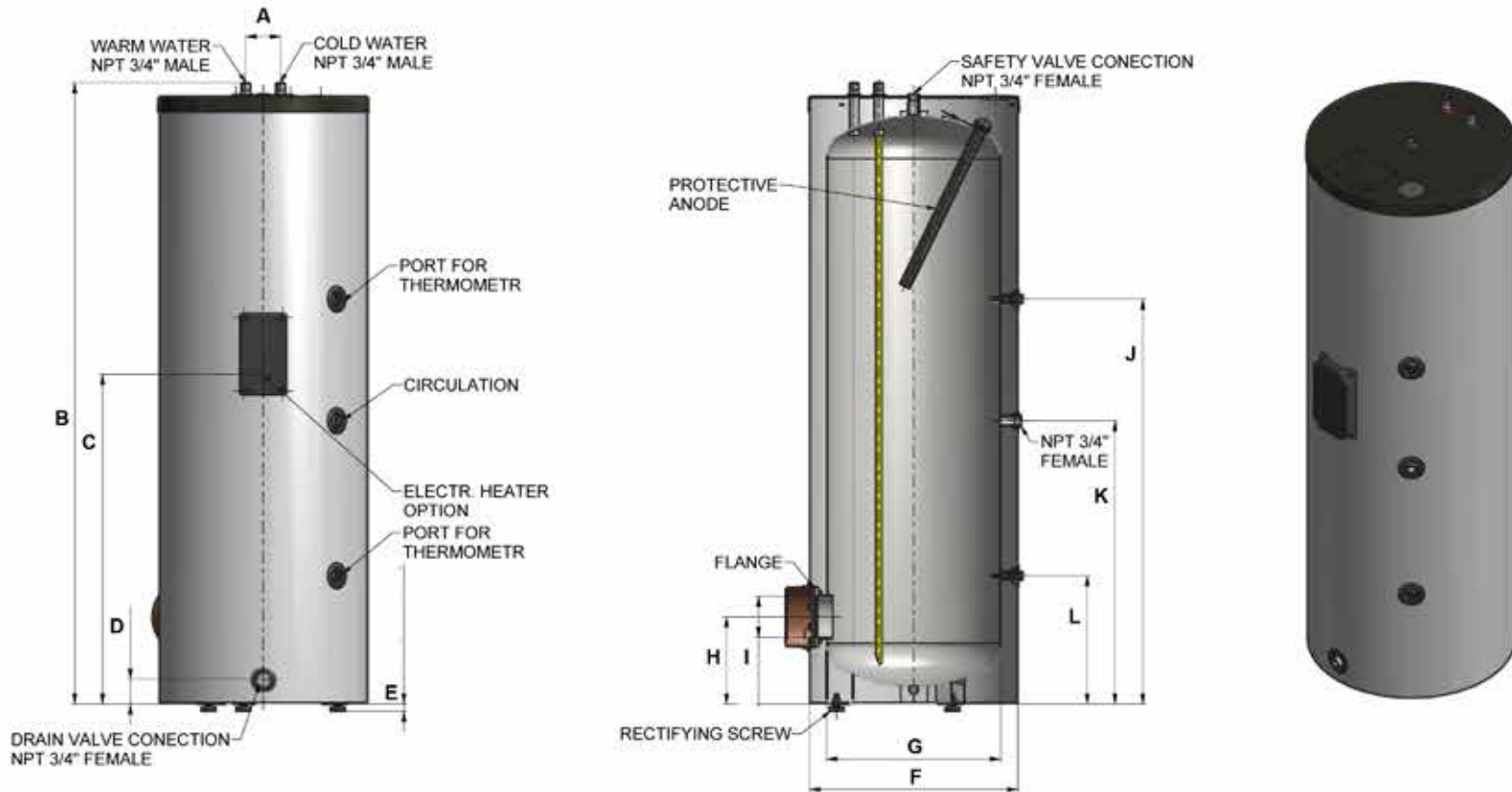




# Product Data Sheet

## StorMaxx SE Series (cont.)

StorMaxx-SE-080-0HX-EE, StorMaxx-SE-080-1HX-EE, StorMaxx-SE-080-2HX-EE



### Specific Dimensions (in Inches)

A	B	C	D	E	F	G	H	I	J	K	L
3.9	70.4	37.4	2.8	1.6	23.6	19.7	9.9	4.7	45.9	32.1	14.5

SunMaxx Solar  
 5098 NY 206  
 Bainbridge, NY 13733  
 P: 1.877.786.6299  
 F: 1.800.786.0329  
[www.SunMaxxSolar.com](http://www.SunMaxxSolar.com)

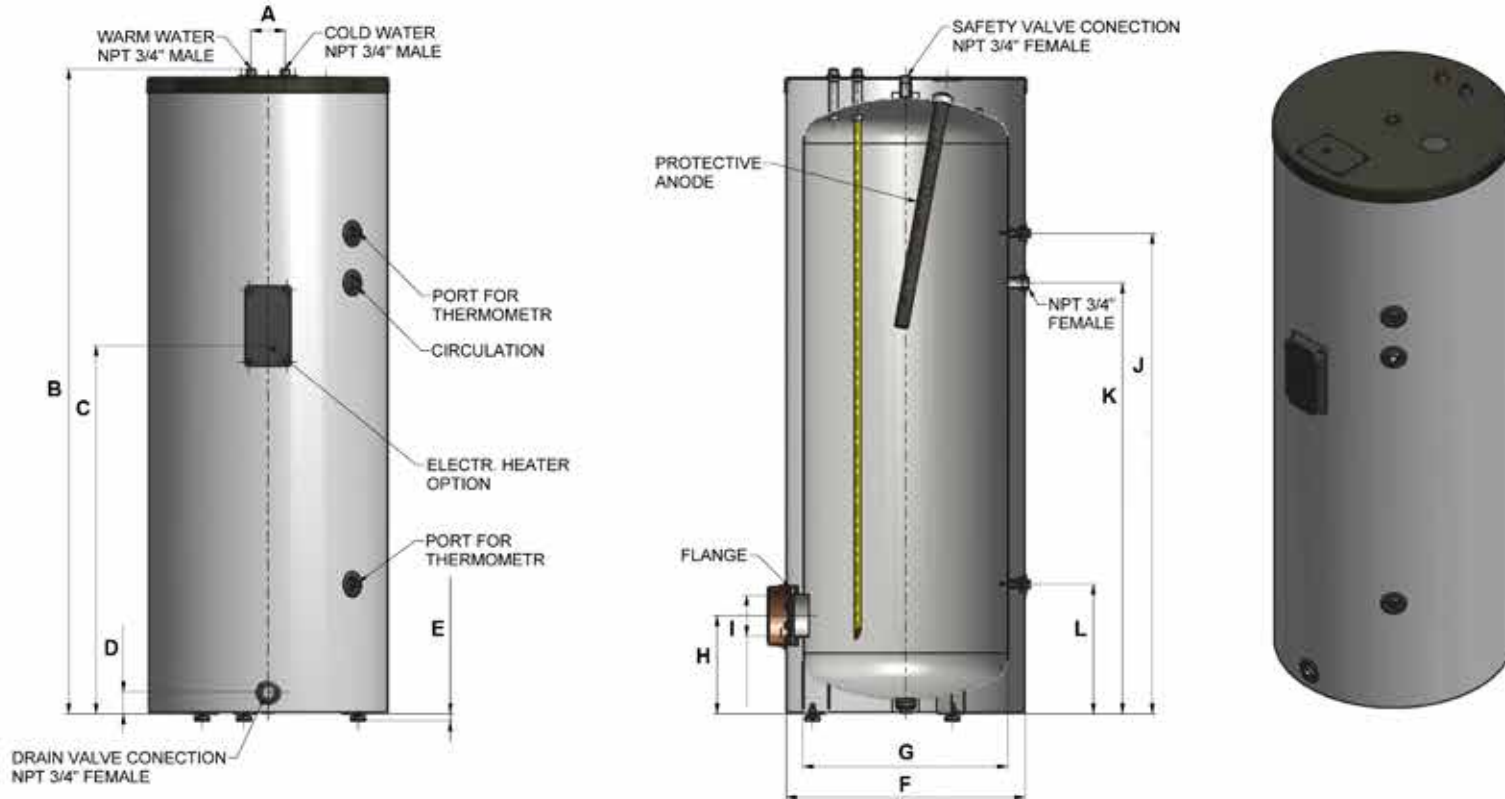




# Product Data Sheet

## StorMaxx SE Series (cont.)

StorMaxx-SE-119-0HX-EE, StorMaxx-SE-119-1HX-EE, StorMaxx-SE-119-2HX-EE



### Specific Dimensions (in Inches)

A	B	C	D	E	F	G	H	I	J	K	L
3.9	74.5	42.5	2.6	1.6	27.6	23.6	11.3	4.7	55.5	49.8	15

SunMaxx Solar  
 5098 NY 206  
 Bainbridge, NY 13733  
 P: 1.877.786.6299  
 F: 1.800.786.0329  
[www.SunMaxxSolar.com](http://www.SunMaxxSolar.com)





# Product Data Sheet

## StorMaxx ETEC Series

Model	Volume (G)	Weight (lbs)	Diameter (in)	Height (in)	Wall Material	# of HX	Insulation Thickness (in)	Element / Backup
StorMaxx-ETEC-040-1HX	40	96	20	46	Stainless Steel	1	2	NA
StorMaxx-ETEC-080-2HX	80	165	22	72	Stainless Steel	2	2	NA
StorMaxx-ETEC-105-2HX	105	286	27	76	Stainless Steel	2	2	NA



- StorMaxx-ETEC-080-2HX
- StorMaxx-ETEC-105-2HX



All Connection Are:  
3/4" NPT Male

Wall material:  
SUS 316L (1.5mm)  
stainless steel

SunMaxx Solar  
5098 NY 206  
Bainbridge, NY 13733  
P: 1.877.786.6299  
[www.SunMaxxSolar.com](http://www.SunMaxxSolar.com)



# Product Data Sheet

## StorMaxx ETEC Series

Models	40G Models	80G Models	105G Models
<b>Heat Exchanger Coil Data</b>			
Capacity (Top)	1.9 G	1.9 G	2.5 G
Surface Area (Top)	11.8 FT <sup>2</sup>	11.8 FT <sup>2</sup>	15.1 FT <sup>2</sup>
Coil Length (Top)	34.1 FT	34.1 FT	45.3 FT
Capacity (Bottom)	1.9 G	2.6 G	3.5 G
Surface Area (Bottom)	11.8 FT <sup>2</sup>	16.1 FT <sup>2</sup>	21.5 FT <sup>2</sup>
Coil Length (Bottom)	34.1 FT	47.6 FT	62.3 FT

Models	40G Models	80G Models	105G Models
<b>Pressure Drop Through Coils (Based On Flow Rate)</b>			
Flow Rate (GPM)	Head Loss (FT)		
2 (Top / Bottom)	0.1 / 0.1	0.1 / 0.14	0.14 / 0.19
4 (Top / Bottom)	0.36 / 0.36	0.36 / 0.5	0.48 / 0.66
6 (Top / Bottom)	0.79 / 0.79	0.79 / 1.11	1.06 / 1.46

SunMaxx Solar  
 5098 NY 206  
 Bainbridge, NY 13733  
 P: 1.877.786.6299  
[www.SunMaxxSolar.com](http://www.SunMaxxSolar.com)

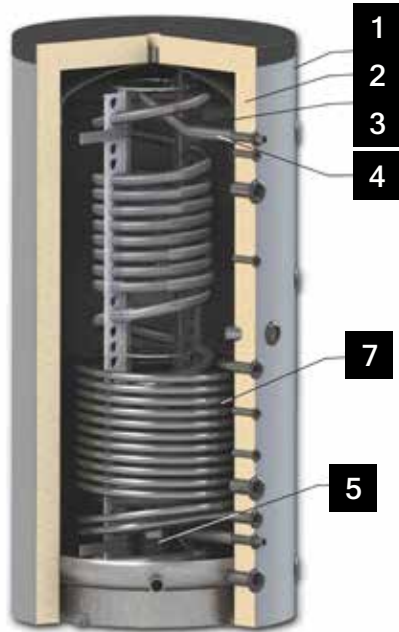


# Product Data Sheet

## StorMaxx CTEC Series

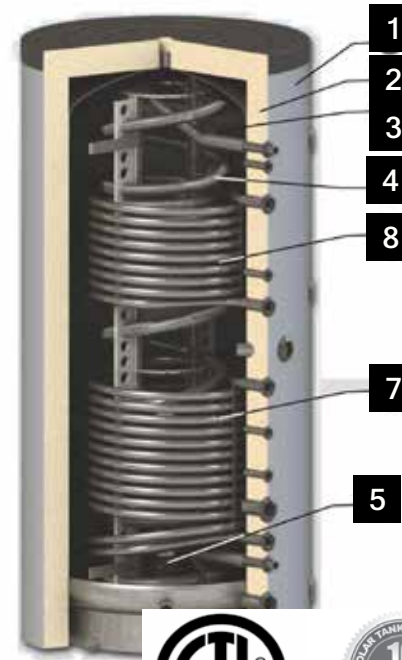
Model	Volume (G)	Weight (lbs)	Diameter (in)	Height (in)	Wall Material	# of HX	Insulation Thickness (in)	Element / Backup
StorMaxx-CTEC-132-2HX-V4	132	336	34	64	Carbon Steel	2	4	NA
StorMaxx-CTEC-213-2HX-V4	213	430	39	74	Carbon Steel	2	4	NA
StorMaxx-CTEC-213-3HX-V4	213	483	39	76	Carbon Steel	3	4	Boiler
StorMaxx-CTEC-264-2HX-V4	264	506	39	80	Carbon Steel	2	4	NA
StorMaxx-CTEC-264-3HX-V4	264	564	39	83	Carbon Steel	3	4	Boiler

### StorMaxx-CTEC-132-2HX-V4, StorMaxx-CTEC-213-2HX-V4, StorMaxx-CTEC-264-2HX-V4



1. Aesthetic PVC jacket with color RAL 9006
2. Highly efficient thermal insulation
3. Low-carbon steel water tank
4. Sanitary grade stainless steel DHW heat exchanger tube
5. Water stratification unit
7. Lower coil

### StorMaxx-CTEC-213-3HX-V4, StorMaxx-CTEC-264-3HX-V4



#### Technical Description

1. Aesthetic PVC jacket with color RAL 9006
2. Highly efficient thermal insulation
3. Low-carbon steel water tank
4. Sanitary grade stainless steel DHW heat exchanger tube
5. Water stratification unit
6. Safety valve, 8 bar
7. Lower coil
8. upper coil



SunMaxx Solar  
 5098 NY 206  
 Bainbridge, NY 13733  
 P: 1.877.786.6299  
[www.SunMaxxSolar.com](http://www.SunMaxxSolar.com)



# Product Data Sheet

## StorMaxx CTEC Series (cont.)

### Technical Specifications - 3HX Models

Model	StorMaxx-CTEC-213-3HX-V4	StorMaxx-CTEC-264-3HX-V4
Buffer Capacity	202.6 G	255.5 G
Heat Exchanger Capacity (DHW)	8.7 G	8.7 G
Heat Exchanger Surface Area (DHW)	80.7 FT <sup>2</sup>	80.7 FT <sup>2</sup>
Heat Exchanger Capacity (Bottom)	4.7 G	4.9 G
Heat Exchanger Surface Area (Bottom)	31.2 FT <sup>2</sup>	32.3 FT <sup>2</sup>
Heat Exchanger Capacity (Top)	2.9 G	3.3 G
Heat Exchanger Surface Area (Top)	19.4 FT <sup>2</sup>	21.5 FT <sup>2</sup>
Heat Exchanger Operating Pressure (DHW)	232 PSI	232 PSI
Heat Exchanger Max Temperature (DHW)	230 °F	230 °F
Heat Exchanger Operating Pressure (Bottom / Top)	44 PSI	44 PSI
Heat Exchanger Max Temperature (Bottom / Top)	203 °F	203 °F
Buffer Tank Operating Pressure	87 PSI	87 PSI
Buffer Tank Max Temperature	203 °F	203 °F
Continuous Output @ 104 °F w/ Buffer At 149 °F	462 G	607 G
Max Single Output @ 100 °F w/ Buffer At 149 °F	153 G	208 G



SunMaxx Solar  
 5098 NY 206  
 Bainbridge, NY 13733  
 P: 1.877.786.6299  
[www.SunMaxxSolar.com](http://www.SunMaxxSolar.com)



# Product Data Sheet

## StorMaxx CTEC Series (cont.)

### Technical Specifications - 2HX Models

Model	StorMaxx-CTEC-132-2HX-V4	StorMaxx-CTEC-213-2HX-V4	StorMaxx-CTEC-264-2HX-V4
Buffer Capacity	126.8 G	202.6 G	255.5 G
Heat Exchanger Capacity (DHW)	5.3 G	8.7 G	8.7 G
Heat Exchanger Surface Area (DHW)	48.4 FT <sup>2</sup>	80.7 FT <sup>2</sup>	80.7 FT <sup>2</sup>
Heat Exchanger Capacity (Bottom)	2.8 G	4.7 G	4.9 G
Heat Exchanger Surface Area (Bottom)	18.3 FT <sup>2</sup>	31.2 FT <sup>2</sup>	32.3 FT <sup>2</sup>
Heat Exchanger Capacity (Top)	-	-	-
Heat Exchanger Surface Area (Top)	-	-	-
Heat Exchanger Operating Pressure (DHW)	232 PSI	232 PSI	232 PSI
Heat Exchanger Max Temperature (DHW)	230 °F	230 °F	230 °F
Heat Exchanger Operating Pressure (Bottom / Top)	44 PSI	44 PSI	44 PSI
Heat Exchanger Max Temperature (Bottom / Top)	203 °F	203 °F	203 °F
Buffer Tank Operating Pressure	87 PSI	87 PSI	87 PSI
Buffer Tank Max Temperature	203 °F	203 °F	203 °F
Continuous Output @ 104 °F w/ Buffer At 149 °F	357 G	462 G	608 G
Max Single Output @ 100 °F w/ Buffer At 149 °F	100 G	153 G	209 G



SunMaxx Solar  
 5098 NY 206  
 Bainbridge, NY 13733  
 P: 1.877.786.6299  
[www.SunMaxxSolar.com](http://www.SunMaxxSolar.com)



# Product Data Sheet

## StorMaxx NP Series

Model	Volume (G)	Weight (lbs)	Diameter (in) (A)	Height (in) (B)	Wall Material	# of HX*	Insulation Thickness (in)	Element / Backup
StorMaxx-NP-0150G-4FT	150	129	36	48	EPDM Liner	1	2	NA
StorMaxx-NP-0200G-4FT	200	137	40	48	EPDM Liner	1	2	NA
StorMaxx-NP-0225G-4FT	225	141	44	48	EPDM Liner	1	2	NA
StorMaxx-NP-0250G-4FT	250	155	48	48	EPDM Liner	2	2	NA
StorMaxx-NP-0300G-4FT	300	166	52	48	EPDM Liner	3	2	NA
StorMaxx-NP-0400G-4FT	400	185	58	48	EPDM Liner	3	2	NA
StorMaxx-NP-0400G-5FT	400	222	52	60	EPDM Liner	2	2	NA
StorMaxx-NP-0500G-4FT	500	206	64	48	EPDM Liner	4	2	NA
StorMaxx-NP-0500G-5FT	500	226	58	60	EPDM Liner	3	2	NA
StorMaxx-NP-0600G-4FT	600	227	70	48	EPDM Liner	5	2	NA
StorMaxx-NP-0600G-5FT	600	264	64	60	EPDM Liner	4	2	NA
StorMaxx-NP-0700G-4FT	700	241	76	48	EPDM Liner	6	2	NA
StorMaxx-NP-0700G-5FT	700	270	67	60	EPDM Liner	5	2	NA
StorMaxx-NP-0800G-4FT	800	267	80	48	EPDM Liner	7	2	NA
StorMaxx-NP-0800G-5FT	800	274	70	60	EPDM Liner	5	2	NA
StorMaxx-NP-0800G-6FT	800	281	63	72	EPDM Liner	5	2	NA

SunMaxx Solar  
 5098 NY 206  
 Bainbridge, NY 13733  
 P: 1.877.786.6299  
[www.SunMaxxSolar.com](http://www.SunMaxxSolar.com)





# Product Data Sheet

## StorMaxx NP Series (cont.)

Model	Volume (G)	Weight (lbs)	Diameter (in) (A)	Height (in) (B)	Wall Material	# of HX*	Insulation Thickness (in)	Element / Backup
StorMaxx-NP-0950G-5FT	950	309	76	60	EPDM Liner	6	2	NA
StorMaxx-NP-1000G-5FT	1000	338	80	60	EPDM Liner	7	3	NA
StorMaxx-NP-1200G-4FT	1200	359	96	48	EPDM Liner	9	3	NA
StorMaxx-NP-1200G-5FT	1200	371	86	60	EPDM Liner	8	3	NA
StorMaxx-NP-1300G-4FT	1300	386	100	48	EPDM Liner	10	3	NA
StorMaxx-NP-1500G-5FT	1500	426	96	60	EPDM Liner	9	3	NA
StorMaxx-NP-1500G-6FT	1500	413	86	72	EPDM Liner	-	3	NA
StorMaxx-NP-1700G-7FT	1700	666	86	84	EPDM Liner	8	3	NA
StorMaxx-NP-1900G-6FT	1900	723	96	72	EPDM Liner	9	3	NA
StorMaxx-NP-2000G-6FT	2000	754	100	72	EPDM Liner	10	3	NA
StorMaxx-NP-2100G-5FT	2100	732	110	60	EPDM Liner	10	3	NA
StorMaxx-NP-2200G-7FT	2200	774	96	84	EPDM Liner	9	3	NA
StorMaxx-NP-2500G-5T	2500	784	120	60	EPDM Liner	12	3	NA
StorMaxx-NP-2800G-7FT	2800	925	108	84	EPDM Liner	10	3	NA
StorMaxx-NP-3500G-7FT	3500	1064	120	84	EPDM Liner	-	3	NA
StorMaxx-NP-4000G-7FT	4000	1179	128	84	EPDM Liner	-	3	NA

SunMaxx Solar  
 5098 NY 206  
 Bainbridge, NY 13733  
 P: 1.877.786.6299  
[www.SunMaxxSolar.com](http://www.SunMaxxSolar.com)

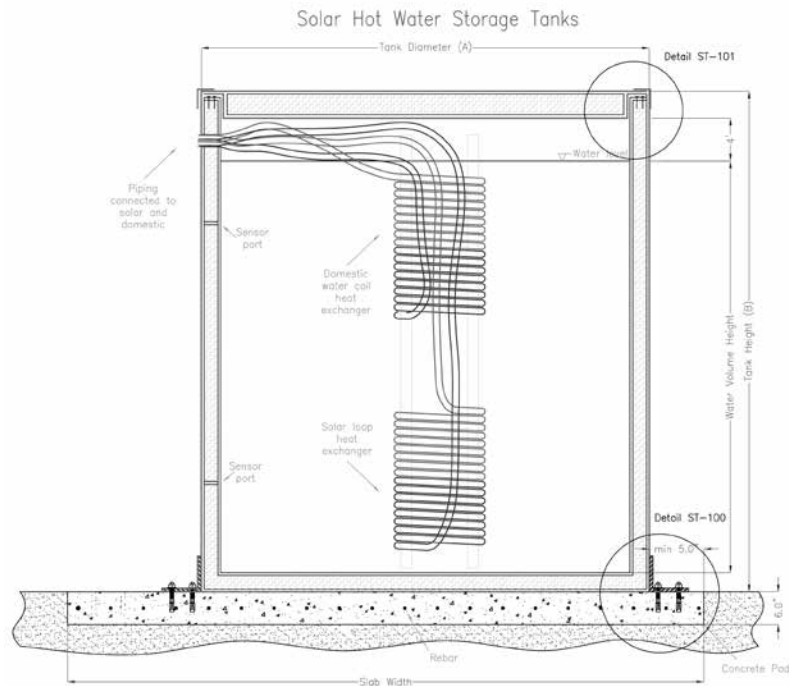


# Product Data Sheet

## StorMaxx NP Series (cont.)

Model	Volume (G)	Weight (lbs)	Diameter (in) (A)	Height (in) (B)	Wall Material	# of HX*	Insulation Thickness (in)	Element / Backup
StorMaxx-NP-4500G-7FT	4500	1278	135	84	EPDM Liner	-	3	NA
StorMaxx-NP-5000G-7FT	5000	1344	142	84	EPDM Liner	-	3	NA

\* This is the max number of heat exchangers for this tank. They must be purchased separately - please call your sales representative.



Tank drawing is a representation. Placement and/or quantity of pipe pass-through ports, sensor ports and flanges is customizable. Please contact our Engineering Department for more information regarding custom designs.

### Technical Specifications for Storage Tanks

Construction	Round, 0.032 embossed aluminum
Liner (tank & lid)	Single sheet, 0.045 thickness EPDM
Insulation	Rigid R14 isocyanurate foam
Sealant	RTV silicone
Diameter (in)	32 - 142 (depending on model)
Height (in)	48 - 84 (depending on model)
Tank Sizes (G)	120 - 5000

SunMaxx Solar  
 5098 NY 206  
 Bainbridge, NY 13733  
 P: 1.877.786.6299  
[www.SunMaxxSolar.com](http://www.SunMaxxSolar.com)



# Product Data Sheet

## StorMaxx NP-A Series

### Coil Heat Exchangers

StorMaxx-NP-A-CC-120FT	120FT Stacked Copper Coil Heat Exchanger
StorMaxx-NP-A-CC-6060FT	60 / 60FT Stacked Copper Coil Heat Exchanger
StorMaxx-NP-A-CC-9090FT	90 / 90FT Stacked Copper Coil Heat Exchanger
StorMaxx-NP-A-CSS-8080FT-3/4IN-4FT	80 / 80 4FT Stacked Corrugated Stainless Steel HX (3/4IN)
StorMaxx-NP-A-CSS-8080FT-3/4IN-6FT	80 / 80 6FT Stacked Corrugated Stainless Steel HX (3/4IN)

### Technical Specifications For Copper Coils

Material	3/4" L-Soft Copper, Spiral Coil
Coil Dimensions (D x H)	21" x 42"

### Accessories

StorMaxx-NP-A-H2OLEVEL	Water Level Indicator for NP Tanks
StorMaxx-NP-A-SEISMIC	Seismic Anchor Cleat Kit for Tank

### Technical Specifications For Stainless Steel Coils

Material	3/4" Corrugated Stainless Steel, Spiral Coil
Coil Dimensions (D x H)	17" x 13"

### Passthroughs

StorMaxx-NP-A-AWP-1-1/4INx3IN	1-1/4INx3IN Above Water Passthrough
StorMaxx-NP-A-AWP-1-1/2INx3IN	1-1/2INx3IN Above Water Passthrough
StorMaxx-NP-A-AWP-1-1/4INx5IN	1-1/4INx5IN Above Water Passthrough
StorMaxx-NP-A-AWP-1-1/2INx5IN	1-1/2INx5IN Above Water Passthrough
StorMaxx-NP-A-AWP-2IN	2IN Above Water Passthrough
StorMaxx-NP-A-AWP-3/4IN	3/4IN Above Water Passthrough

SunMaxx Solar  
 5098 NY 206  
 Bainbridge, NY 13733  
 P: 1.877.786.6299  
[www.SunMaxxSolar.com](http://www.SunMaxxSolar.com)

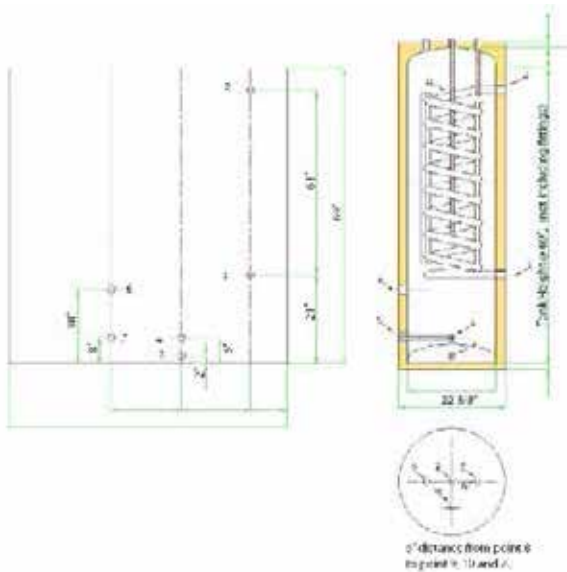


# Product Data Sheet

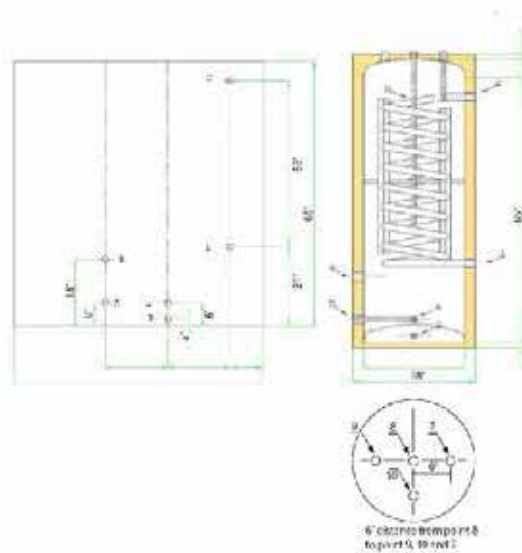
## StorMaxx SEM Series

Model	Volume (G)	Weight (lbs)	Diameter (in)	Height (in)	Wall Material	# of HX	Insulation Thickness (in)	Element / Backup
StorMaxx-SEM-080-1HX-EE	80	236	22	69	Stainless Steel	1	2	4500W 240V
StorMaxx-SEM-119-1HX-EE	119	325	27	65	Stainless Steel	1	2	4500W 240V

StorMaxx-SEM-080-1HX-EE



StorMaxx-SEM-119-1HX-EE



### Additional Technical Specifications

Maximum Working Temperature	200F
Maximum Working Pressure	100 psi
Maximum Test Pressure	174 psi

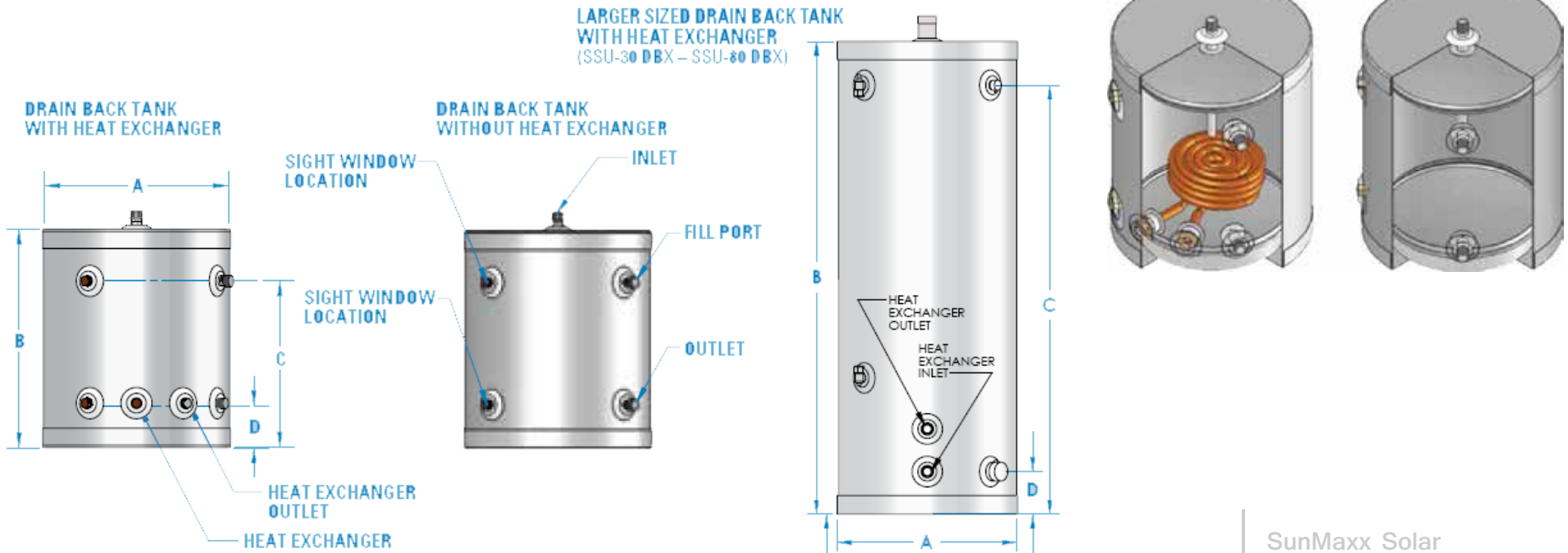
SunMaxx Solar  
 5098 NY 206  
 Bainbridge, NY 13733  
 P: 1.877.786.6299  
[www.SunMaxxSolar.com](http://www.SunMaxxSolar.com)



# Product Data Sheet

## StorMaxx DB Series

Model	Volume (G)	Weight (lbs)	Diameter (in)	Height (in)	Wall Material	# of HX	Insulation Thickness (in)	Element / Backup
StorMaxx-ODB-10HE	10	20	19	20	Stainless Steel	1	-	NA
StorMaxx-ODB-20	20	30	19	27	Stainless Steel	0	-	NA
StorMaxx-ODB-30	30	30	19	40	Stainless Steel	0	-	NA



SunMaxx Solar  
 5098 NY 206  
 Bainbridge, NY 13733  
 P: 1.877.786.6299  
[www.SunMaxxSolar.com](http://www.SunMaxxSolar.com)