



Fraunhofer Institut
Solare Energiesysteme

Test Report: KTB Nr. 2007-07-ag-k2-en

Collector test according to EN 12975-1,2:2006

for:

SILICON SOLAR INC., USA

Brand name:

Sunmaxx-series

Responsible for testing:

Dipl.-Ing. (FH) K. Kramer

Date:

21st May 2008

Address:

Fraunhofer-Institute for Solar Energy Systems ISE

Heidenhofstraße 2, D-79110 Freiburg

Tel.: +49-761-4588-5354; Fax.: +49-761-4588-9354

E-mail: korbinian.kramer@ise.fraunhofer.de

Internet: www.kollektortest.de

Accredited according to DIN EN ISO/IEC 17025:2005



Registration No.:
DAP-PL-3926.00



Contents

1 Summary	4
1.1 Preliminary remark	4
1.2 Collector efficiency parameters determined	4
1.3 Incidence angle modifier - IAM	4
1.4 Effective thermal capacity of the collector	4
1.5 Schedule of tests and calculations	5
1.6 Summary statement	5
2 Test Center	6
3 Orderer, Expeller, Manufacturer	6
4 Overview of series Sunmaxx-series collectors	7
4.1 Specific data of the largest collector of the series (Sunmaxx-30) . .	7
4.2 Specific data of the smallest collector of the series (Sunmaxx-10) .	8
4.3 Specification of the tubes	8
4.4 Absorber	9
4.5 Insulation and Casing	9
4.6 Limitations	9
4.7 Kind of mounting	10
4.8 Picture and cut drawing of the collector	11
5 Collector efficiency parameters	12
5.1 Test method	12
5.2 Description of the calculation	12
5.3 Efficiency parameters	13
5.4 Power output per collector unit	14
6 Incidence angle modifier IAM	16
7 Effective thermal capacity of the collector	17
8 Internal pressure test	17
9 High temperature resistance test	17



10 Exposure test	18
11 External thermal shock tests	18
12 Internal thermal shock tests	19
13 Rain penetration test	19
14 Freeze resistance test	19
15 Mechanical load test	19
15.1 Positive pressure test of the collector cover	19
15.2 Negative pressure test of fixings between the cover and the collector box	20
15.3 Negative pressure test of mountings	20
16 Stagnation temperature	20
17 Final inspection	21
18 Collector identification	21
19 Summary statement	22
20 Annotation to the test report	22
A Drawing of absorber layout	23
B Efficiency curve	24
B.1 Efficiency curve with measurement points based on aperture area 0.936 m ²	24
B.2 Efficiency curve for the determined coefficients and for an assumed irradiation of 800 W/m ² based on aperture area	25
B.3 Measured data for efficiency curve	26
C Data of the exposure test	27

1 Summary

1.1 Preliminary remark

The tests have been performed according to EN 12975-1,2:2006. Main purpose for testing has been, to fulfill all requirements of the SolarKeymark Scheme rules (version 8.0, January 2003).

All requirements have been met.

The certificate of the collector minimum gain of 525 kWh/m²a is handed.

The present report is valid for the Sunmaxx-series including the collectors Sunmaxx-10, Sunmaxx-12, Sunmaxx-14, Sunmaxx-15, Sunmaxx-16, Sunmaxx-18, Sunmaxx-20, Sunmaxx-24, Sunmaxx-25, Sunmaxx-28 and Sunmaxx-30 of the company SILICON SOLAR INC.. The tests were performed at the largest and at the smallest collector of this series.

1.2 Collector efficiency parameters determined

Results:

The calculated parameters are based on following areas of the collector Sunmaxx-10 . These parameters are valid for the complete series.

aperture area of 0.936 m²: absorber area of 0.808 m²:

$$\eta_{0a} = 0.734$$

$$\eta_{0A} = 0.850$$

$$a_{1a} = 1.529 \text{ W/m}^2\text{K}$$

$$a_{1A} = 1.771 \text{ W/m}^2\text{K}$$

$$a_{2a} = 0.0166 \text{ W/m}^2\text{K}^2$$

$$a_{2A} = 0.0192 \text{ W/m}^2\text{K}^2$$

1.3 Incidence angle modifier - IAM

θ :	0°	10°	20°	30°	40°	50°	53°	60°	70°	80°	90°
$K_{\theta T}$:	1.00	1.00	1.03	1.11	1.25	1.37	1.40	1.36	1.11	0.70	0.05
$K_{\theta L}$:	1.00	1.00	1.00	0.99	0.96	0.92	0.88	0.84	0.69	0.44	0.00

Table 1: Measured (**bold**) and calculated IAM data for Sunmaxx-10

1.4 Effective thermal capacity of the collector

Effective thermal capacity (Sunmaxx-10):

$$14.6 \text{ kJ/K}$$

The effective thermal capacity per square meter is (valid for the series):

$$15.6 \text{ kJ/K m}^2$$

1.5 Schedule of tests and calculations

Test	Date	Result
Date of delivery:	October 26th 2006	
1st internal pressure	November 9th 2006	passed
High temperature resistance	March 3rd 2006	passed
Exposure	October 26th 2006 - 14th March 2007	passed
1st external thermal shock	November 15th 2006	passed
2nd external thermal shock	March 8th 2006	passed
1st internal thermal shock	November 7th 2006	passed
2nd internal thermal shock	February 15th 2007	passed
Rain penetration	November 15th 2006	passed
Freeze resistance		not relevant
Mechanical load		passed
Stagnation temperature		200.3 °C
Final inspection		passed
Determination of collector parameters	13th March 2006 - 15th March 2006	passed
Determination of IAM		passed
Effective thermal capacity		performed

1.6 Summary statement

No problems or distinctive observations occurred during the measurements.



2 Test Center

Test Center for Thermal Solar Systems of Fraunhofer ISE
Heidenhofstraße 2, D-79110 Freiburg
Tel.: +49-761-4588-5139 or -5141; Fax.: +49-761-4588-9139
E-mail: korbinian.kramer@ise.fraunhofer.de; rommel@ise.fraunhofer.de
Internet: <http://www.kollektortest.de>

3 Orderer, Expeller, Manufacturer

Orderer:	SILICON SOLAR INC. Mr. Adam Farrell Solar Park Bainbridge NY 13733 USA Tel: +1-800-653-8540 Fax: +1-866-746-5508 adam04@siliconsolar.com
Expeller:	see orderer
Manufacturer:	Jiangsu sunrain solar energy co. ltd Ning hai industrial Zone Lianyungang Tel: 0086 518 8505 180 6 Fax: 0086 518 8505 180 8 E-mail: jjaoqt@sunrain.com

4 Overview of series Sunmaxx-series collectors

According to the SolarKeymark Scheme rules (version 8.0, January 2003) there is an agreement concerning collectors, which differ only in size, so called series or families. Only the biggest and the smallest collector have to be tested in this case. A complete collector test according to EN 12975-1,2 has to be performed at the biggest collector. The efficiency test only is sufficient at the smallest collector. The SolarKeymark label based on this tests is valid for the whole series.

(MS) = Manufacturer Specification

Brand name	test collector	number of tubes	length of tubes
Sunmaxx-10	yes	10	1.800 m (MS)
Sunmaxx-12	no	12 (MS)	1.800 m (MS)
Sunmaxx-14	no	14 (MS)	1.800 m (MS)
Sunmaxx-15	no	15 (MS)	1.800 m (MS)
Sunmaxx-18	no	18 (MS)	1.800 m (MS)
Sunmaxx-20	no	20 (MS)	1.800 m (MS)
Sunmaxx-24	no	24 (MS)	1.800 m (MS)
Sunmaxx-25	no	25 (MS)	1.800 m (MS)
Sunmaxx-28	no	28 (MS)	1.800 m (MS)
Sunmaxx-30	yes	30	1.800 m (MS)

4.1 Specific data of the largest collector of the series (Sunmaxx-30)

Brand name:	Sunmaxx-30
Serial no.:	
Year of production:	2006
Number of test collectors:	1
Collector reference no. (ISE):	2 KT 57 001 102006 (function tests)
Total area:	2.025 m * 2.420 m = 4.901 m ²
Collector depth:	0.189 m
Aperture area:	1.710 m x 0.0544 m x 30 tubes = 2.791 m ²
Absorber area:	1.710 m x 0.0470 m x 30 tubes = 2.411 m ²
Weight empty:	106 kg
Volume of the fluid:	2,3 l (MS)

4.2 Specific data of the smallest collector of the series (Sunmaxx-10)

Brand name:	Sunmaxx-10
Serial no.:	
Year of production:	2006
Number of test collectors:	1
Collector reference no.(ISE):	2 KT 57 003 102006
Total area:	2.008 m * 0.854 m = 1.715 m ²
Collector depth:	0.189 m
Aperture area:	1.720 m x 0.0544 m x 10 tubes = 0.936 m ²
Absorber area:	1.720 m x 0.0470 m x 10 tubes = 0.808 m ²
Weight empty:	39.6 kg
Volume of the fluid:	0,7 l (MS)

4.3 Specification of the tubes

	(MS) = Manufacturer Specification
Type:	vacuum tube collector heat pipe, dry connection without mirror
Material of the cover tube:	borosilicate glass (MS)
Transmission of the cover tube:	≥ 91 % (MS)
Outer diameter of the cover tube:	0.058 m (MS)
Thickness of the cover tube:	0.0018 m (MS)
Outer diameter of the inner tube:	0.047 m (MS)
Thickness of the inner tube:	0.0016 m (MS)
Distance from tube to tube:	0.078 m (MS)

4.4 Absorber

Material of the absorber:	Cu/Al/SS/ N_2 on borosilicate glass (MS)
Kind/Brand of selective coating:	ALN/SS-ALN/Cu (MS)
Absorptivity coefficient α :	≥ 94 % (MS)
Emissivity coefficient ε :	≤ 7 % (MS)
Material of the absorber pipes:	copper (MS)
Layout of the absorber pipes:	heat pipe, dry connection (MS)
Outer diameter:	0.008 m (MS)
Inner diameter:	0.0068 m (MS)
Material of the header pipe:	copper (MS)
Outer diameter of the header pipe:	0.038 m (MS)
Inner diameter of the header pipe:	0.034 m (MS)
Material of the contact sheets:	aluminium (MS)
Thickness of the contact sheets:	0.0002 m (MS)

4.5 Insulation and Casing

Medium between the inner and outer tubes of the vacuum flask:	high vacuum (MS)
Thickness of the insulation in the header:	0.040 m (MS)
Material:	polyurethane, mineral wool (MS)
Material of the casing:	aluminium (MS)
Sealing material:	silicon rubber (MS)

4.6 Limitations

Maximum fluid pressure:	1000 kPa (MS)
Operating fluid pressure:	600 kPa (MS)
Maximum service temperature:	95 °C (MS)
Maximum stagnation temperature:	200.3 °C
Maximum wind load:	not specified
Recommended tilt angle:	15 °- 75 °(MS)
Flow range recommendation:	50 -150 l/m ² h (MS)



4.7 Kind of mounting

Flat roof - mounted on the roof:	yes (MS)
Tilted roof - mounted on the roof:	no (MS)
Tilted roof - integrated:	yes (MS)
Free mounting:	no (MS)
Fassade:	yes (MS)

4.8 Picture and cut drawing of the collector



Figure 1: Picture of the collector Sunmaxx-30 mounted on the test facility of Fraunhofer ISE

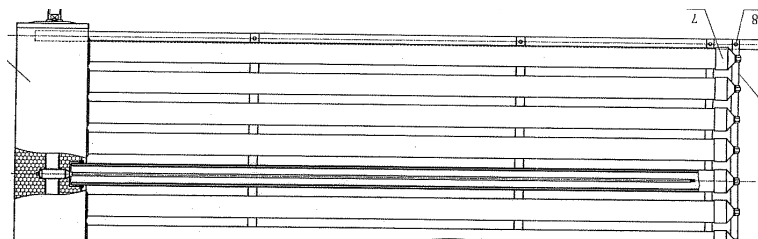


Figure 2: Cut drawing of the collector Sunmaxx-10

5 Collector efficiency parameters

5.1 Test method

Outdoor, steady state according to EN 12975-2:2006 (tracker)
Thermal solar systems and components - solar collectors,
Part 2: Test methods

5.2 Description of the calculation

The functional dependence of the collector efficiency on the meteorological and system operation values can be represented by the following mathematical equation:

$$\eta_{(G,(t_m-t_a))} = \eta_0 - a_{1a} \frac{t_m - t_a}{G} - a_{2a} \frac{(t_m - t_a)^2}{G} \quad (1)$$

(based on aperture area)

$$t_m = \frac{t_e + t_{in}}{2}$$

where: G = global irradiance on the collector area (W/m^2)
 t_{in} = collector inlet temperature ($^{\circ}\text{C}$)
 t_e = collector outlet temperature ($^{\circ}\text{C}$)
 t_a = ambient temperature ($^{\circ}\text{C}$)

The coefficients η_0 , a_{1a} and a_{2a} have the following meaning:

η_0 : Efficiency without heat losses, which means that the mean collector fluid temperature is equal to the ambient temperature:

$$t_m = t_a$$

The coefficients a_{1a} and a_{2a} describe the heat loss of the collector. The temperature dependency of the collector heat loss is described by:

$$a_{1a} + a_{2a} * (t_m - t_a)$$

5.3 Efficiency parameters

Boundary conditions:

As the collector is constructed without a reflector or another defined reflecting backside, the efficiency measurements were performed by using a tarpaulin with a defined absorption coefficient of 83 %. This corresponds to typical absorption coefficients of common roof tile.

Test method:	outdoor, steady state
Latitude:	48.0°
Longitude:	7.8°
Collector tilt:	tracked between 35° and 55°
Collector azimuth:	tracked
Mean irradiation :	936 W/m ²
Mean wind speed:	3 m/s
Mean flow rate:	66 kg/h
Kind of fluid:	water
date of the Measurement	February 2007

Results:

The calculated parameters are based on following areas of the collector Sunmaxx-10 . These values are also valid for the complete series.¹:

aperture area of 0.936 m ² :	absorber area of 0.808 m ² :
$\eta_{0a} = 0.734$	$\eta_{0A} = 0.850$
$a_{1a} = 1.529 \text{ W/m}^2\text{K}$	$a_{1A} = 1.771 \text{ W/m}^2\text{K}$
$a_{2a} = 0.0166 \text{ W/m}^2\text{K}^2$	$a_{2A} = 0.0192 \text{ W/m}^2\text{K}^2$

The determination for the standard deviation (k=2) was performed according ENV 13025 (GUM). Based on this calculation the uncertainty is less than 2%-points of the efficiency values over the complete measured temperature range ($\eta_{0a} = 0.734 \pm 0.02$). Based on our experience with the test facilities the uncertainty is much smaller and in a range of **+/- 1%-point**. The standard deviation of the heat loss parameters resulting from the regression fit curve through the measurement points is:

$$a_{1a} = 1.529 \pm 0.0686 \text{ and } a_{2a} = 0.0166 \pm 0.0008 .$$

For more detailed data and the calculated efficiency curve please see annex B.

¹ absorber area - projected area of absorber tube,
aperture area - projected area of inner diameter of cover tube

5.4 Power output per collector unit

The power output per collector unit will be documented for the largest collector of the series Sunmaxx-30 with the highest output per collector unit and for the smallest collector of the series Sunmaxx-10 with the lowest output per collector unit.

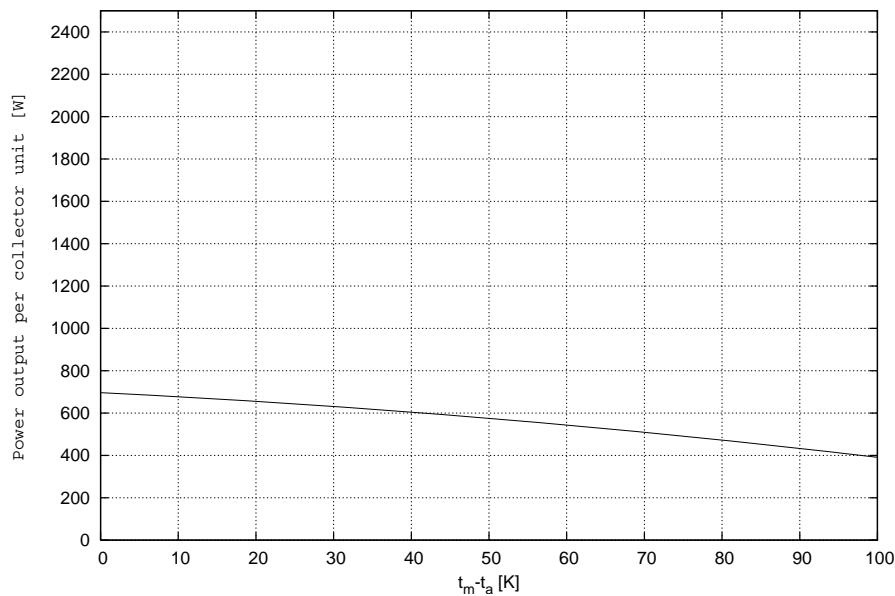


Figure 3: Power output for collector Sunmaxx-10 based on 1000 W/m²

Power output per collector unit [W] for collector Sunmaxx-10
(aperture area of 0.936 m²):

$t_m - t_a$ [K]	400 [W/m ²]	700 [W/m ²]	1000 [W/m ²]
10	259	465	671
30	218	424	630
50	164	371	577

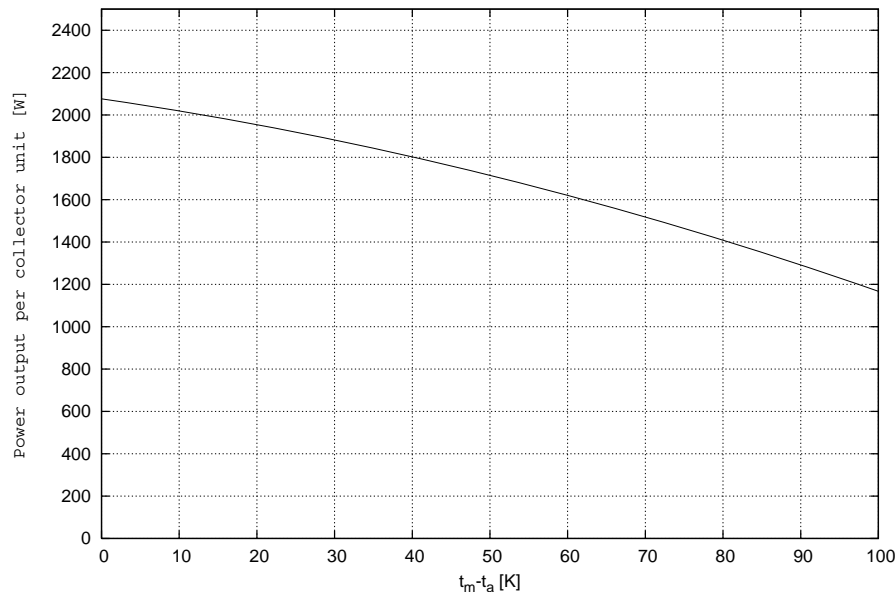


Figure 4: Power output for collector Sunmaxx-30 based on 1000 W/m²

Power output per collector unit [W] for collector Sunmaxx-30
(aperture area of 2.791 m²):

$t_m - t_a$ [K]	400 [W/m ²]	700 [W/m ²]	1000 [W/m ²]
10	772	1387	2001
30	650	1264	1879
50	490	1105	1719

The power output per collector unit can be calculated for other collectors of this series according to the following procedure:

$$P = P_{ref} * \frac{A_a}{A_{a,ref}}$$

with:

- P = Collector output for a different collector of the series
- P_{ref} = Collector output for collector Sunmaxx-10 , (values see table)
- A_a = Aperture area of a different collector of the series
- $A_{a,ref}$ = Aperture area of collector Sunmaxx-10 = 0.936 m²

6 Incidence angle modifier IAM

The IAM (= Incidence Angle Modifier) is a correction factor representing how the angle of incident radiation affects the performance of a collector. For collectors which have a direction-dependent IAM behaviour (for example vacuum tube collectors and collectors with CPC reflectors), it is necessary to measure the IAM for more than one direction, to have a proper determination of the IAM.

The complex IAM can be estimated by calculating it as the product of both separately measured incidence angle modifiers $K_{\theta L}$ and $K_{\theta T}$ of two orthogonal planes (equation 2).

$$K_{\theta} = K_{\theta L} \times K_{\theta T} \quad (2)$$

The longitudinal plane (index L) is orientated parallelly to the optical axis of the collector. The transversal plane is orientated orthogonally to the optical axis of the collector. The angles θT and θL are the projection of the incidence angle of the radiation on the transversal or longitudinal plane.

Test method:	outdoor, steady state
Latitude:	48.0°
Longitude:	7.8°
Collector tilt:	tracked
Collector azimuth:	tracked

θ :	0°	10°	20°	30°	40°	50°	53°	60°	70°	80°	90°
$K_{\theta T}$:	1.00	1.00	1.03	1.11	1.25	1.37	1.40	1.36	1.11	0.70	0.05
$K_{\theta L}$:	1.00	1.00	1.00	0.99	0.96	0.92	0.88	0.84	0.69	0.44	0.00

Table 2: Measured (**bold**) and calculated IAM data for Sunmaxx-10

The angles for the transversal IAM in table 2 were calculated according to Ambrosetti ¹(equation 3).

$$K_{\theta} = 1 - \left[\tan \frac{\theta}{2} \right]^{\frac{1}{r}} \quad (3)$$

¹P.Ambrosetti. Das neue Bruttowärmeertragsmodell für verglaste Sonnenkollektoren, Teil 1 Grundlagen. EIR, Wurenlingen 1983

7 Effective thermal capacity of the collector

The effective thermal capacity of the collector is calculated according to section 6.1.6.2 of EN 12975-2:2006. For the heat transfer fluid a mixture 2/1 of water/propylenglycol at a temperature of 50°C has been chosen.

Effective thermal capacity (Sunmaxx-10):

14.6 kJ/K

The effective thermal capacity per square meter is (valid for the series):

15.6 kJ/K m²

8 Internal pressure test

Maximum pressure:	1000 kPa (MS)
Test temperature:	12.3 °C
Test pressure:	1500 kPa (1.5 times the maximum pressure)
Test duration:	15 min

Result:

During and after the test no leakage, swelling or distortion was observed or measured.

9 High temperature resistance test

Method:	Indoor testing
Collector tilt angle:	45°
Average irradiance during test:	1011 W/m ²
Average surrounding air temperature:	25.3 °C
Average surrounding air speed:	< 0.5 m/s
Average absorber temperature:	197,5 °C
Duration of test:	1 h

Result:

No degradation, distortion, shrinkage or outgassing was observed or measured at the collector.

10 Exposure test

The collector tilt angle was 45° facing south. Annex C shows all test days of the exposure test.

Result:

The number of days when the daily global irradiance was more than 14 MJ/m²d was 41. The periods when the global irradiance G was higher than 850 W/m² and the surrounding air temperature t_a was higher than 10 °C was 41.7 h.

The evaluation of the exposure test is described in the chapter 17 "Final inspection".

11 External thermal shock tests

Test conditions	1st test	2nd test
Outdoors:	yes	yes
Combined with exposure test:	yes	yes
Combined with high temperatur resistance test:	no	no
Collector tilt angle:	45°	45°
Average irradiance:	850 W/m ²	860 W/m ²
Average surrounding air temperature:	17.8 °C	12.6°C
Period during which the required operating conditions were maintained prior to external thermal shock:	1 h	1 h
Flowrate of water spray:	0.05 l/m ² s	0.05 l/m ² s
Temperature of water spray:	16.6 °C	16.0 °C
Duration of water spray:	15 min	15 min
Absorber temperature immediately prior to water spray:	162.0 °C	159.1°C

Result:

No cracking, distortion, condensation or water penetration was observed or measured at the collector.

12 Internal thermal shock tests

Test conditions	1st test	2nd test
Outdoors:	yes	yes
Combined with exposure test:	yes	yes
Combined with high temperature resistance test:	no	no
Collector tilt angle:	45°	45°
Average irradiance:	884 W/m ²	957 W/m ²
Average surrounding air temperature:	9.8 °C	10.4 °C
Period during which the required operating conditions were maintained prior to internal thermal shock:	1 h	1 h
Flowrate of heat transfer fluid:	0.02 l/m ² s	0.02 l/m ² s
Temperature of heat transfer fluid:	16.6 °C	16.4 °C
Duration of heat transfer fluid flow:	5 min	5 min
Absorber temperature immediately prior to heat transfer fluid flow:	160.0 °C	180.2 °C

No cracking, distortion or condensation was observed or measured at the collector.

13 Rain penetration test

Collector mounted on:	Open frame
Method to keep the absorber warm:	Exposure of collector to solar radiation
Flowrate of water spray:	0.05 l/m ² s
Duration of water spray:	4 h

Result:

No water penetration was observed or measured at the collector.

14 Freeze resistance test

The freeze resistance test is not relevant, because the manufacturer suggests a application of the collector only with a freeze resistance fluid.

15 Mechanical load test

15.1 Positive pressure test of the collector cover

This test was not performed by means of implementing pressure. The collector was visually observed and the structure was checked from a technical point of view.

15.2 Negative pressure test of fixings between the cover and the collector box

This test was not performed by means of implementing pressure. The collector was visually observed and the structure was checked from a technical point of view.

15.3 Negative pressure test of mountings

The mechanical load test is not reasonable for this collector because of the vacuum tube type without reflector.

16 Stagnation temperature

The stagnation temperature was measured outdoors. The measured data are shown in the table below. To determine the stagnation temperature, these data were extrapolated to an irradiance of 1000 W/m² and an ambient temperature of 30 °C. The calculation is as follows:

$$t_s = t_{as} + \frac{G_s}{G_m} * (t_{sm} - t_{am}) \quad (4)$$

t_s : Stagnation temperature
 t_{as} : 30 °C
 G_s : 1000 W/m²
 G_m : Solar irradiance on collector plane
 t_{sm} : Absorber temperature
 t_{am} : Surrounding air temperature

Irradiance	Surrounding air temperature	Absorber temperature
[W/m ²]	[°C]	[°C]
1008	13.1	182.8
994	13.5	181.7
967	13.8	179.2
948	13.8	174.7
988	12.4	183.3

The resulting stagnation temperature is:

200.3 °C

17 Final inspection

The following table shows an overview of the result of the final inspection.

Collector component	Potential problem	Evaluation
Collector box/ fasteners	Cracking/ wrapping/ corrosion/ rain penetration	0
Mountings/ structure	Strength/ safety	0
Seals/ gaskets	Cracking/ adhesion/ elasticity	0
Cover/ reflector	Cracking/ crazing/ buckling/ de- lamination/ wrapping/ outgassing	0
Absorber coating	Cracking/ crazing/ blistering	0
Absorber tubes and headers	Deformation/ corrosion/ leak- age/ loss of bonding	0
Absorber mountings	Deformation/ corrosion	0
Insulation	Water retention/ outgassing/ degradation	0

- 0: No problem
- 1: Minor problem
- 2: Severe problem
- x: Inspection to establish the condition was not possible

18 Collector identification

The collector identification/documentation according EN 12975-1 chapter 7 was complete, see the following items:

- Drawings and data sheet
- Labeling of the collector
- Installer instruction manual
(not for mounting integrated in tilted roof or facade mounting,
no pressure lost)
- List of used materials



19 Summary statement

The measurements were carried out from
October 2006 until February 2007 .

No problems or distinctive observations occurred during the measurements.

20 Annotation to the test report

The results described in this test report refer only to the test collector. It is
not allowed to make extract copies of this test report.

Test report: KTB Nr. 2007-07-ag-k2-en

Freiburg, 21st May 2008

Fraunhofer-Institute for Solar Energy Systems ISE

Dipl.-Phys. M. Rommel
Head of the Test Center for
Thermal Solar Systems

Dipl.-Ing. (FH) K. Kramer
Responsible for testing
and report

A Drawing of absorber layout

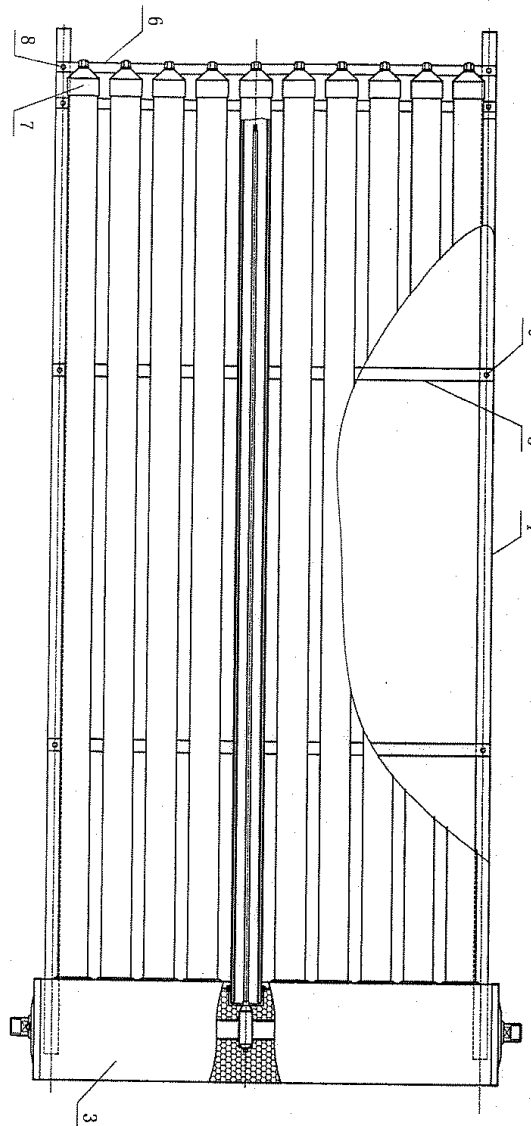


Figure 5: Drawing of absorber layout Sunmaxx-10

B Efficiency curve

B.1 Efficiency curve with measurement points based on aperture area 0.936 m²

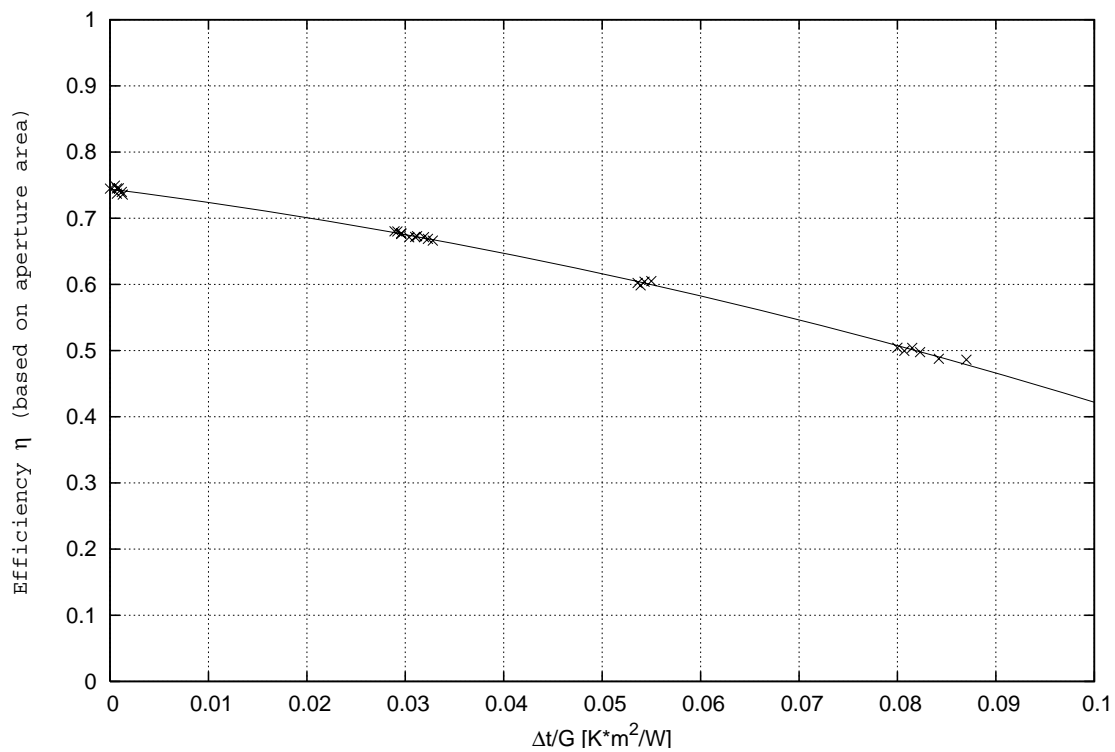


Figure 6: Efficiency curve with measurement points based on aperture area 0.936 m²

Results:

The calculated parameters are based on following areas:

aperture area of 0.936 m²: absorber area of 0.808 m²:

$$\eta_{0a} = 0.734$$

$$\eta_{0A} = 0.850$$

$$a_{1a} = 1.529 \text{ W/m}^2\text{K}$$

$$a_{1A} = 1.771 \text{ W/m}^2\text{K}$$

$$a_{2a} = 0.0166 \text{ W/m}^2\text{K}^2$$

$$a_{2A} = 0.0192 \text{ W/m}^2\text{K}^2$$

B.2 Efficiency curve for the determined coefficients and for an assumed irradiation of 800 W/m² based on aperture area

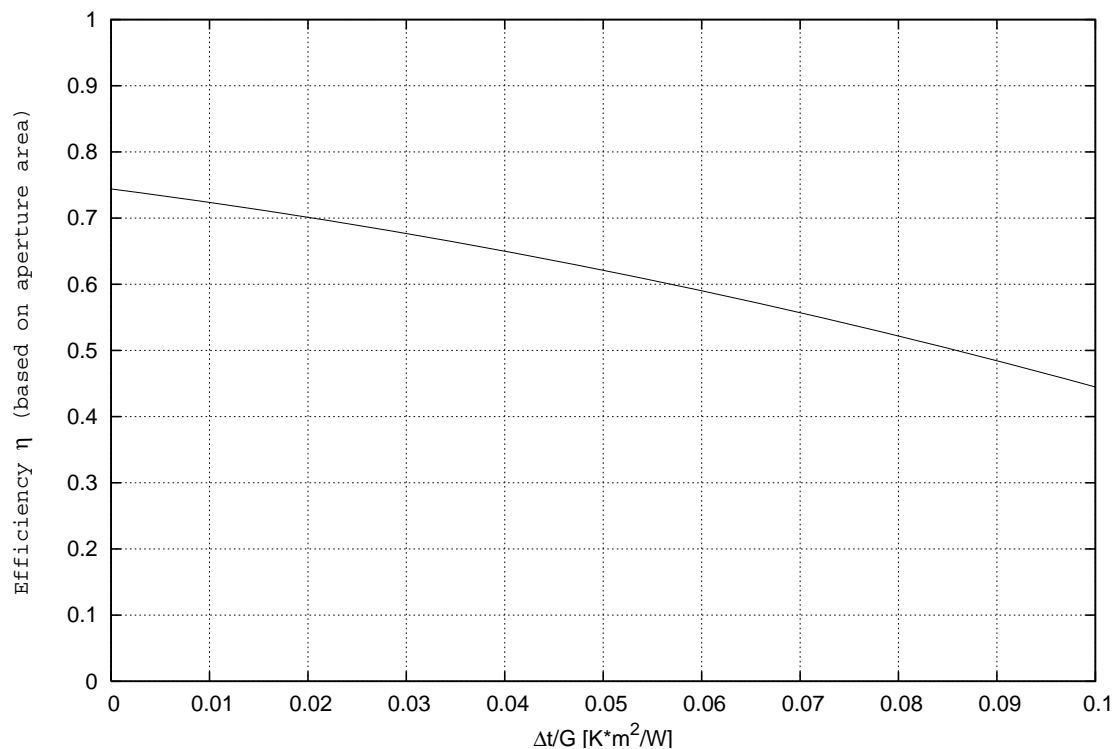


Figure 7: Efficiency curve scaled to 800 W/m² based on aperture area 0.936 m²

The calculated parameters are based on following areas:

aperture area:

$$\eta_{0.05a} = 0.624$$

absorber area:

$$\eta_{0.05A} = 0.723$$

$\eta_{0.05}$ is the efficiency of the collector for typical conditions of solar domestic hot water systems:

irradiation of 800 W/m²,

ambient temperature of 20 °C

mean collector temperature of 60 °C.

B.3 Measured data for efficiency curve

G [W/m ²]	G_d/G [-]	m [kg/h]	t_{in} [°C]	t_e [°C]	$t_e - t_{in}$ [K]	t_m [°C]	t_a [°C]	$t_m - t_a$ [K]	$(t_m - t_a)/G$ [K m ² /W]	η_a [-]
980	0.14	67.7	6.79	15.38	8.60	11.08	9.88	1.21	0.0012	0.740
992	0.13	67.7	6.81	15.46	8.65	11.14	9.88	1.26	0.0013	0.736
969	0.11	67.7	6.84	15.39	8.55	11.12	11.14	-0.02	-0.0000	0.745
937	0.09	67.8	7.78	16.05	8.27	11.91	11.05	0.86	0.0009	0.745
944	0.08	67.8	7.82	16.06	8.24	11.94	11.27	0.67	0.0007	0.737
852	0.17	60.8	6.76	15.14	8.38	10.95	10.39	0.56	0.0007	0.745
843	0.16	60.9	6.78	15.11	8.33	10.95	10.50	0.44	0.0005	0.749
892	0.12	66.1	33.03	40.28	7.25	36.66	7.43	29.23	0.0328	0.666
898	0.12	66.0	33.08	40.42	7.34	36.75	7.75	29.00	0.0323	0.669
905	0.12	66.1	33.10	40.52	7.42	36.81	7.97	28.84	0.0319	0.671
909	0.12	66.0	33.13	40.61	7.48	36.87	8.46	28.41	0.0312	0.673
916	0.12	65.8	33.15	40.69	7.54	36.92	8.56	28.36	0.0310	0.672
923	0.12	65.8	33.18	40.77	7.59	36.97	8.96	28.01	0.0304	0.671
921	0.12	65.9	33.26	40.87	7.61	37.07	9.85	27.21	0.0296	0.676
921	0.12	65.8	33.31	40.96	7.64	37.14	9.89	27.25	0.0296	0.678
919	0.12	65.9	33.36	41.00	7.64	37.18	10.33	26.85	0.0292	0.680
922	0.13	65.9	33.38	41.06	7.67	37.22	10.59	26.63	0.0289	0.680
967	0.09	66.6	60.04	67.08	7.04	63.56	11.76	51.80	0.0536	0.602
960	0.09	66.2	60.06	67.04	6.99	63.55	11.79	51.76	0.0539	0.599
944	0.09	66.3	60.04	66.97	6.93	63.50	11.58	51.92	0.0550	0.605
914	0.10	67.3	60.10	66.71	6.61	63.40	13.83	49.57	0.0543	0.604
931	0.10	65.7	85.10	90.63	5.53	87.87	6.87	80.99	0.0870	0.486
957	0.09	65.7	85.21	90.90	5.69	88.05	7.48	80.57	0.0842	0.488
980	0.08	65.6	85.47	91.43	5.97	88.45	7.81	80.64	0.0823	0.498
985	0.08	65.4	85.50	91.59	6.09	88.54	8.33	80.21	0.0815	0.504
987	0.08	64.9	85.57	91.66	6.09	88.61	8.92	79.69	0.0807	0.499
991	0.08	65.2	85.50	91.65	6.15	88.58	9.31	79.27	0.0800	0.504

Table 3: Data of measured efficiency points

C Data of the exposure test

H: daily global irradiation
valid period: periods when the global irradiance G is higher than 850 W/m^2
and the surrounding air temperature t_a is higher than $10 \text{ }^\circ\text{C}$
t_a: surrounding air temperature
rain: daily rain [mm]

<i>Date</i>	<i>H</i> [MJ/m ²]	<i>valid period</i> [h]	<i>t_a</i> [°C]	<i>rain</i> [mm]
20061026	20.0	1.6	16.8	0
20061027	3.5	0.0	19.7	0
20061028	7.0	0.3	16.2	0
20061029	1.3	0.0	15.4	5
20061030	16.2	1.6	11.2	0
20061031	8.3	0.1	12.7	2
20061101	10.7	0.8	9.6	0
20061102	20.3	0.0	4.2	0
20061103	10.1	0.0	3.7	0
20061104	14.9	0.1	5.0	0
20061105	9.2	0.0	4.1	0
20061106	16.6	0.2	5.2	0
20061107	17.4	0.8	5.3	0
20061108	3.4	0.0	12.5	0
20061109	1.9	0.0	12.7	1
20061110	16.8	0.1	6.1	0
20061111	1.0	0.0	8.0	5
20061112	5.1	0.0	8.8	5
20061113	2.3	0.0	9.1	1
20061114	2.1	0.0	12.9	0
20061115	17.8	0.0	14.1	0
20061116	16.1	0.2	13.2	1
20061117	1.8	0.0	13.8	0
20061118	16.1	0.4	12.1	0
20061119	3.1	0.0	9.6	10
20061120	13.3	0.2	7.7	3
20061121	2.5	0.0	10.1	11
20061122	7.9	0.0	5.8	0
20061123	2.8	0.0	12.3	1
20061124	6.8	0.1	14.1	0
20061125	4.8	0.0	14.4	0
20061126	7.0	0.0	11.9	0
20061127	7.2	0.0	11.0	0
20061128	14.4	0.0	8.4	3
20061129	1.2	0.0	8.9	4
20061130	1.3	0.0	6.9	0

Continuation, see next page:

<i>Date</i>	<i>H</i> [MJ/m ²]	<i>valid period</i> [h]	<i>t_a</i> [°C]	<i>rain</i> [mm]
20061201	14.8	0.0	7.0	0
20061202	9.0	0.1	7.8	0
20061203	8.2	0.0	13.7	0
20061204	3.5	0.0	11.6	4
20061205	4.1	0.1	15.3	12
20061206	0.9	0.0	9.9	4
20061207	11.5	0.1	8.6	1
20061208	1.3	0.0	9.2	20
20061209	1.3	0.0	6.2	6
20061210	7.3	0.0	4.9	0
20061211	1.7	0.0	4.4	3
20061212	1.5	0.0	7.2	0
20061213	15.4	0.0	6.2	0
20061214	14.9	0.0	3.9	0
20061215	16.1	0.0	5.5	0
20061216	6.2	0.0	10.4	0
20061217	1.8	0.0	5.8	4
20061218	9.2	0.0	2.3	not specified
20061219	13.9	0.0	3.1	not specified
20061220	15.5	0.0	2.1	not specified
20061221	15.7	0.0	2.0	not specified
20061222	14.4	0.0	2.0	not specified
20061223	0.9	0.0	-1.3	not specified
20061224	1.0	0.0	0.1	not specified
20061225	0.6	0.0	-0.9	not specified
20061226	1.1	0.0	-0.9	not specified
20061227	9.4	0.0	-1.7	not specified
20061228	11.0	0.0	-1.5	not specified
20061229	12.3	0.0	1.4	not specified
20061230	5.0	0.0	5.8	not specified
20061231	9.3	0.0	12.0	not specified
20070101	1.6	0.0	10.9	not specified
20070102	2.0	0.0	4.7	not specified
20070103	3.7	0.0	5.5	not specified
20070104	1.0	0.0	7.4	not specified
20070105	1.1	0.0	7.5	not specified
20070106	1.7	0.0	10.1	not specified
20070107	2.5	0.0	9.8	not specified
20070108	1.0	0.0	10.8	not specified
20070109	1.5	0.0	12.6	not specified
20070110	13.4	0.0	13.5	not specified

Continuation, see next page:



<i>Date</i>	<i>H</i> [MJ/m ²]	<i>valid period</i> [h]	<i>t_a</i> [°C]	<i>rain</i> [mm]
20070111	5.6	0.0	10.3	not spezified
20070112	4.1	0.0	9.3	not spezified
20070113	17.0	0.1	10.7	not spezified
20070114	4.3	0.1	9.1	not spezified
20070115	2.4	0.0	2.2	not spezified
20070116	3.0	0.0	6.2	not spezified
20070117	1.8	0.0	11.0	not spezified
20070118	0.3	0.0	13.1	not spezified
20070119	1.5	0.0	12.8	not spezified
20070120	7.6	0.2	12.7	not spezified
20070121	9.6	0.1	8.9	not spezified
20070122	2.1	0.0	4.6	not spezified
20070123	0.8	0.0	0.4	not spezified
20070124	1.7	0.0	-4.4	not spezified
20070125	3.6	0.0	-5.3	not spezified
20070126	19.2	0.0	-4.1	not spezified
20070127	2.0	0.0	-0.6	not spezified
20070128	16.5	0.0	2.9	not spezified
20070129	2.1	0.0	4.3	not spezified
20070130	18.1	0.0	3.5	not spezified
20070131	3.0	0.0	2.0	not spezified
20070201	4.0	0.0	3.6	0
20070202	18.0	0.0	4.7	0
20070203	19.5	0.0	6.3	0
20070204	21.0	0.7	5.0	1
20070205	6.5	0.0	5.9	5
20070206	0.8	0.0	3.6	1
20070207	1.6	0.0	5.0	4
20070208	2.5	0.0	7.5	6
20070209	18.9	1.7	8.0	3
20070210	2.3	0.0	7.7	3
20070211	5.0	0.7	8.8	3
20070212	1.6	0.0	9.3	5
20070213	2.9	0.0	7.2	0
20070214	1.5	0.0	5.5	12
20070215	16.5	1.6	8.3	0
20070216	20.6	1.7	5.3	0
20070217	11.2	0.0	4.9	0

Continuation, see next page:



<i>Date</i>	<i>H</i> [MJ/m ²]	<i>valid period</i> [h]	<i>t_a</i> [°C]	<i>rain</i> [mm]
20070218	19.4	1.6	6.4	0
20070219	14.9	0.0	5.5	0
20070220	13.0	0.0	3.1	0
20070221	21.1	2.6	7.3	0
20070222	18.6	0.4	11.2	0
20070223	16.3	1.1	11.7	6
20070224	4.0	0.0	10.7	5
20070225	4.2	0.0	8.9	3
20070226	3.1	0.0	6.9	5
20070227	7.1	0.0	6.7	2
20070228	6.6	0.2	10.9	2
20070301	1.9	0.0	9.4	0
20070302	11.3	0.1	8.1	0
20070303	12.7	1.7	12.0	0
20070304	23.7	4.0	11.2	0
20070305	9.1	0.1	10.3	0
20070306	9.8	0.4	9.5	0
20070307	8.9	0.5	10.3	0
20070308	20.8	3.5	8.4	0
20070309	14.8	0.8	7.6	0
20070310	22.2	1.1	6.7	0
20070311	25.7	2.6	7.4	0
20070312	25.5	3.6	8.6	0
20070313	23.6	3.0	10.1	0
20070314	21.3	2.3	9.5	0