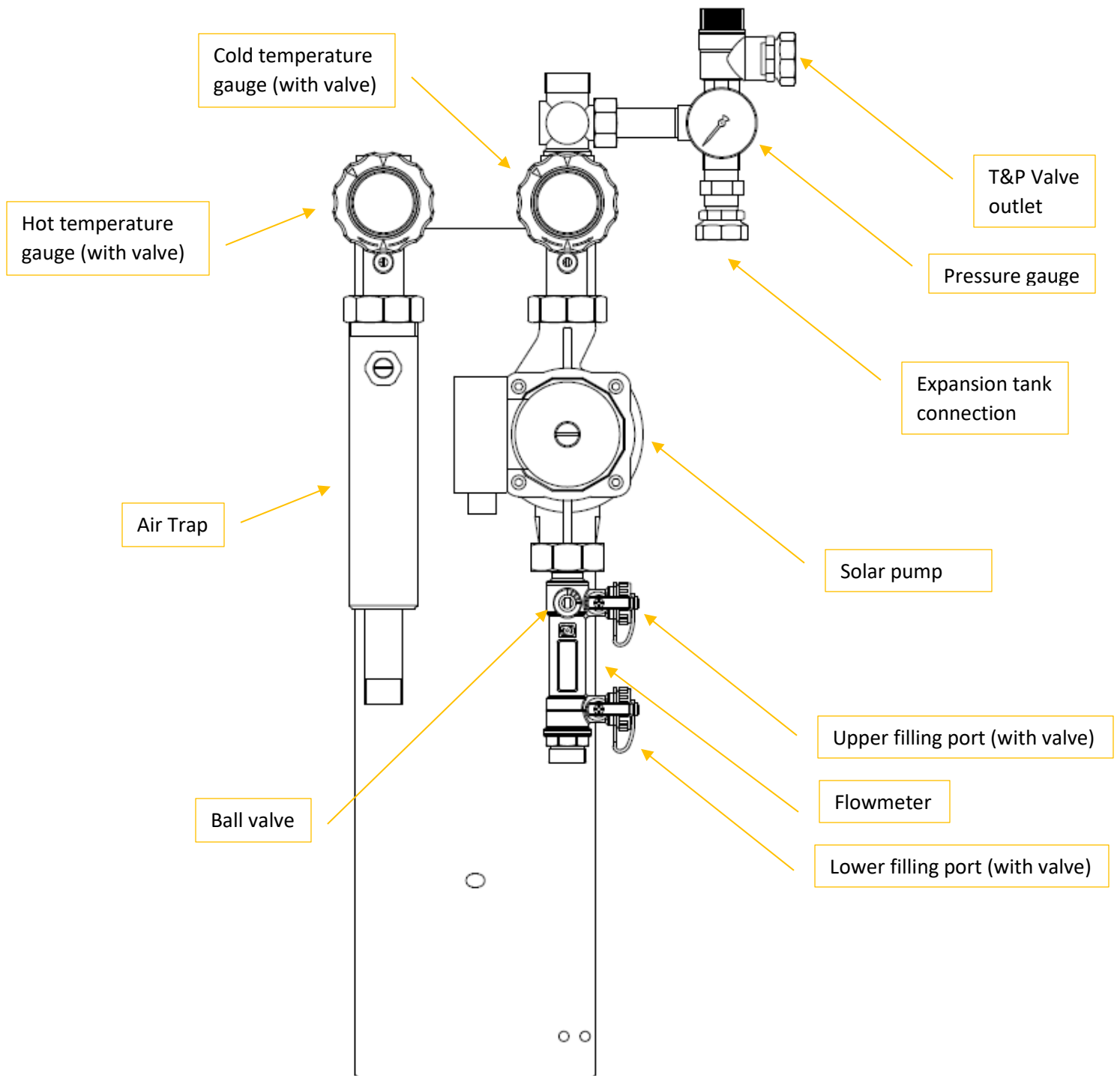


Solar Pump Station Quick Manual



1. Installing copper pipe compression fittings and lineset adapter

Provided with pump station compression fittings should be installed at pump station inlets and outlets.

1"

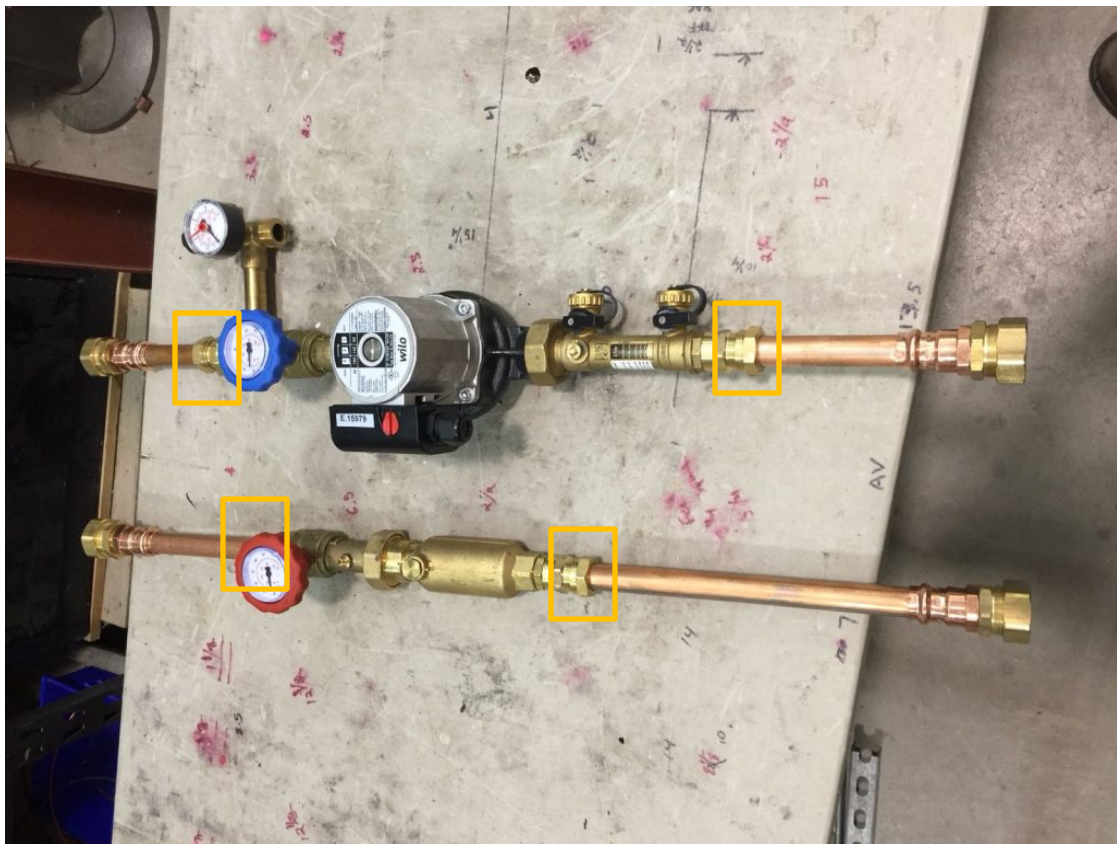


UniMaxx™ Series

3/4"



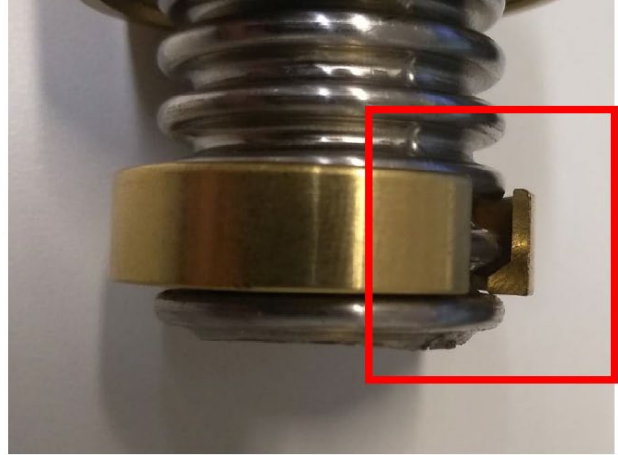
UniMaxx™ Series





2. Connecting lineset (if applicable)







Lineset should be installed with provided quick connect fitting



Assembly video:

[How to connect quick connect fittings with stainless steel pipe](#)

3. Filling the solar circuit

<p>Filling ports and their valves are closed</p> <p>Ball valve in vertical position (allowing glycol to circulate in the solar loop)</p>	<p>Open filling ports by twisting end caps</p>	<p>Open filling ports valves</p>
		
<p>See that there is possibility to fill the system</p>	<p>Turn ball valve to horizontal position (preventing glycol from circulating)</p>	<p>Connect compressor hoses to filling ports and charge system up to 35 PSI</p>
		

After system is charged turn ball valve in vertical position, close filling port valves and reinstall end caps.

4. Solar pump wiring

Solar pump should be supplied with 115-120V power supply. Pump max amperage is 1,5A.

Pump electrical terminal. Wires should be connected to solar controller terminals in order to control its working time.

